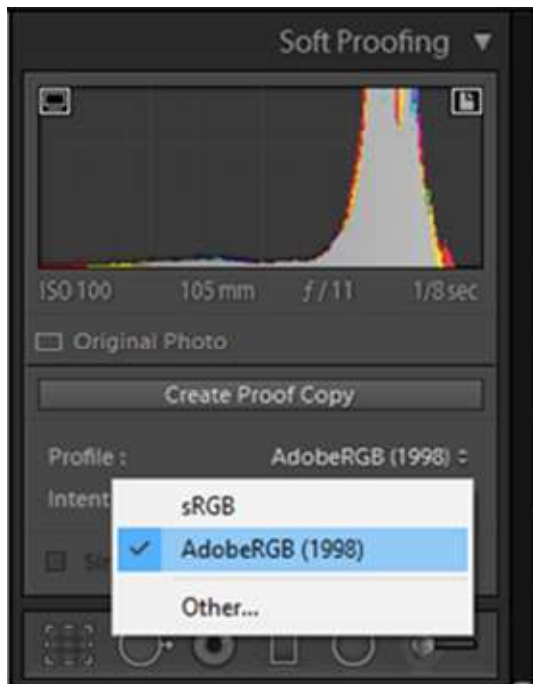
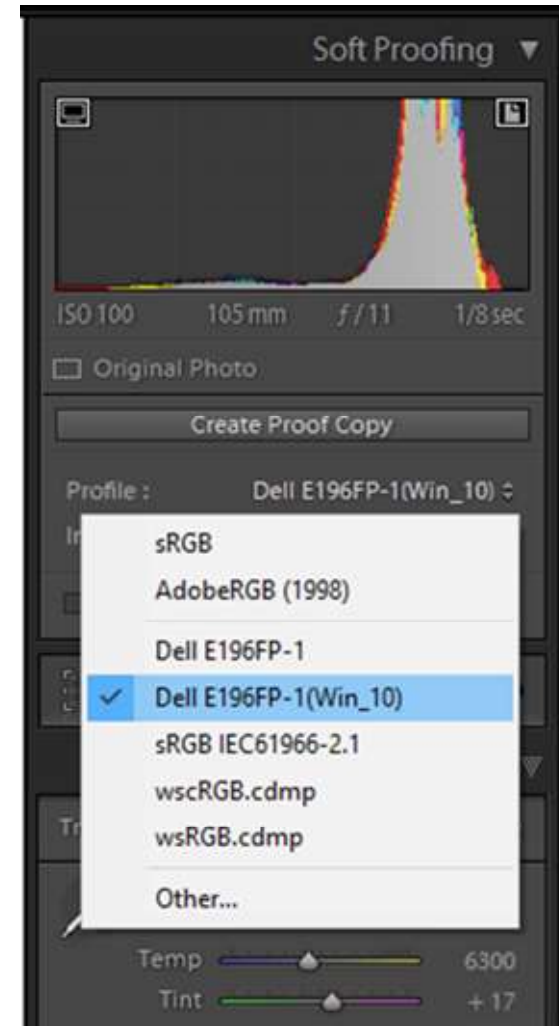


# After Calibrating your Screen / Monitor for Lightroom Selecting the Newly Generated Profile

Before



After



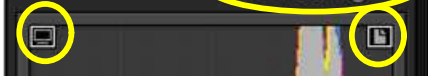
2016\_19\_Nov\_(Peter\_Gordon)\_046.CR2

1/8 sec at f / 11, ISO 100  
105 mm (EF24-105mm f/4L IS USM)



Proof Preview

Soft Proofing ▼



ISO 100 105 mm f / 11 1/8 sec

Original Photo

Create Proof Copy

Profile : wscRGB.cdmp ◀

Intent : Perceptual Relative

Simulate Paper & Ink



Basic ▼

Treatment : Color Black & White

WB : As Shot ◀

Temp 6300

Tint +17

Tone Auto

Exposure -1.05

Contrast -23

Highlights 0

Shadows 0

Whites +66

Blacks -57

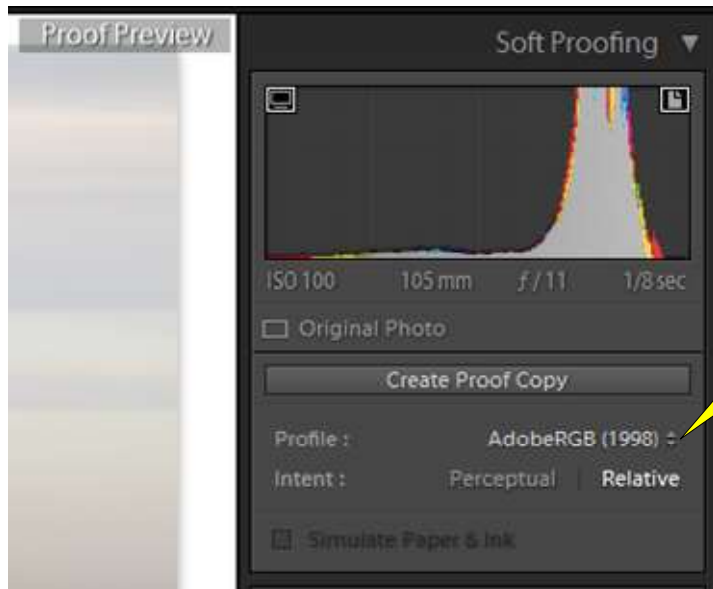
Previous

Reset

Soft Proofing

In Develop Module  
Tick Soft Profing

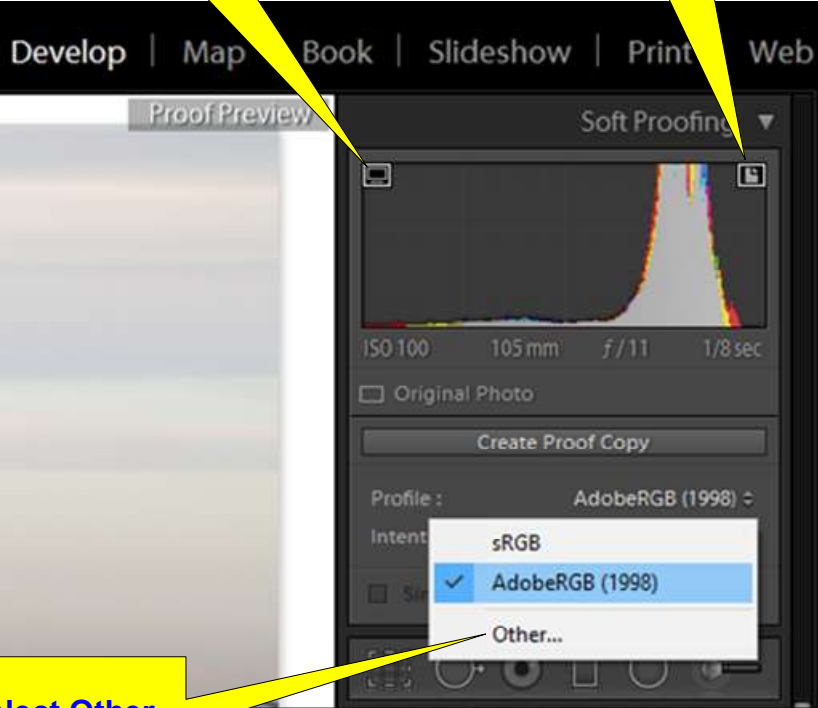
In Develop Module Tick Soft Proofing



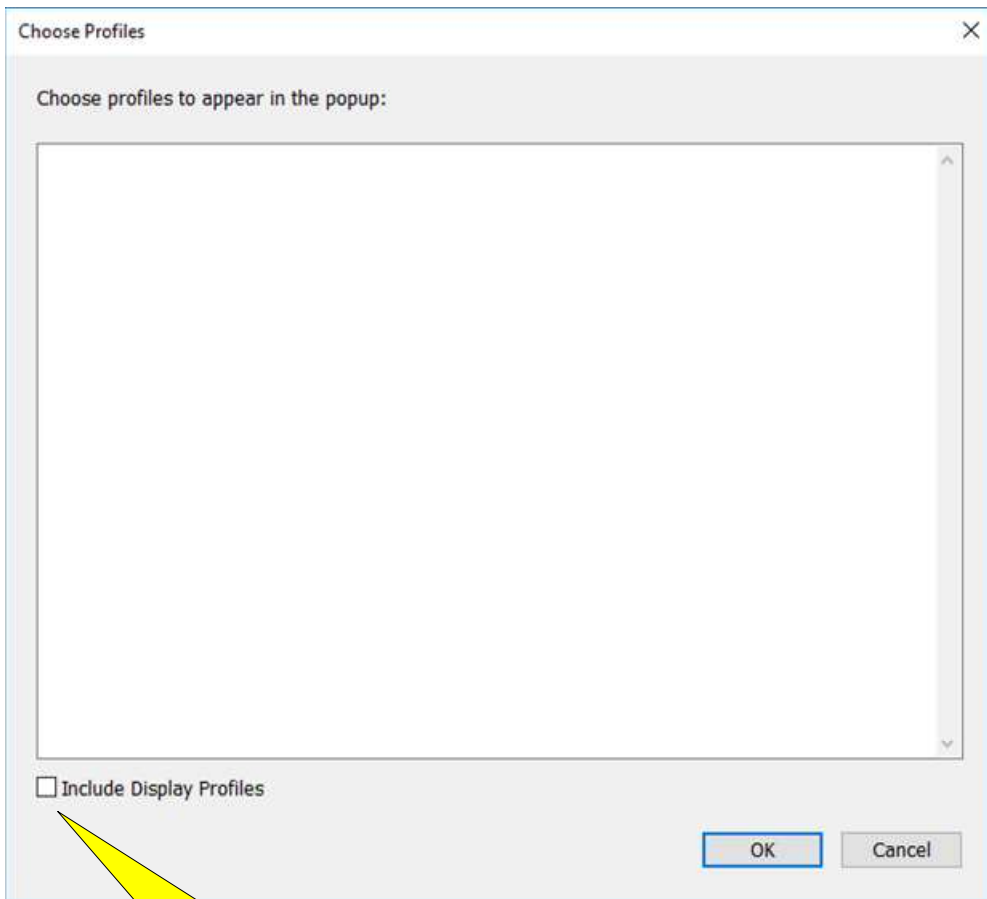
a) Click Profile

Screen Gamut Warning

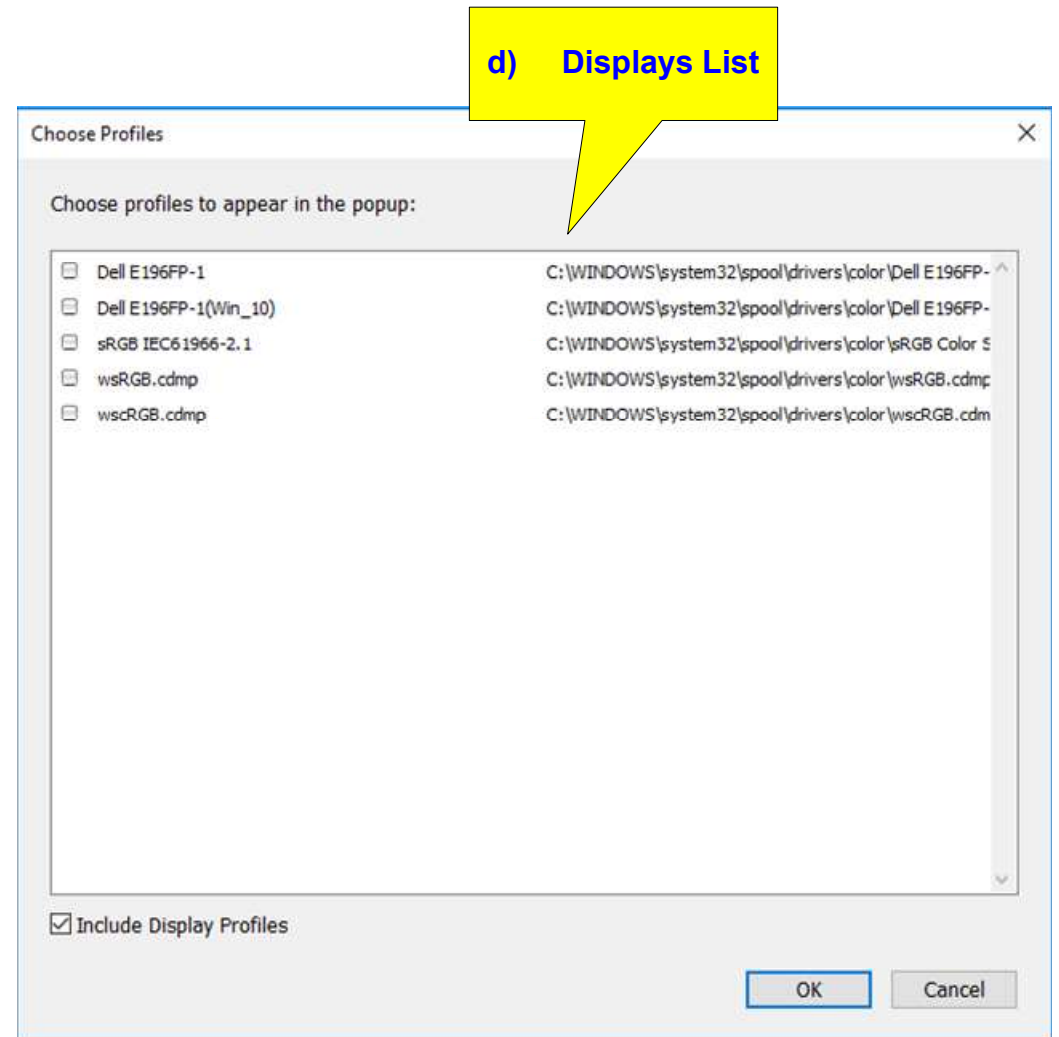
PRINTER Gamut Warning



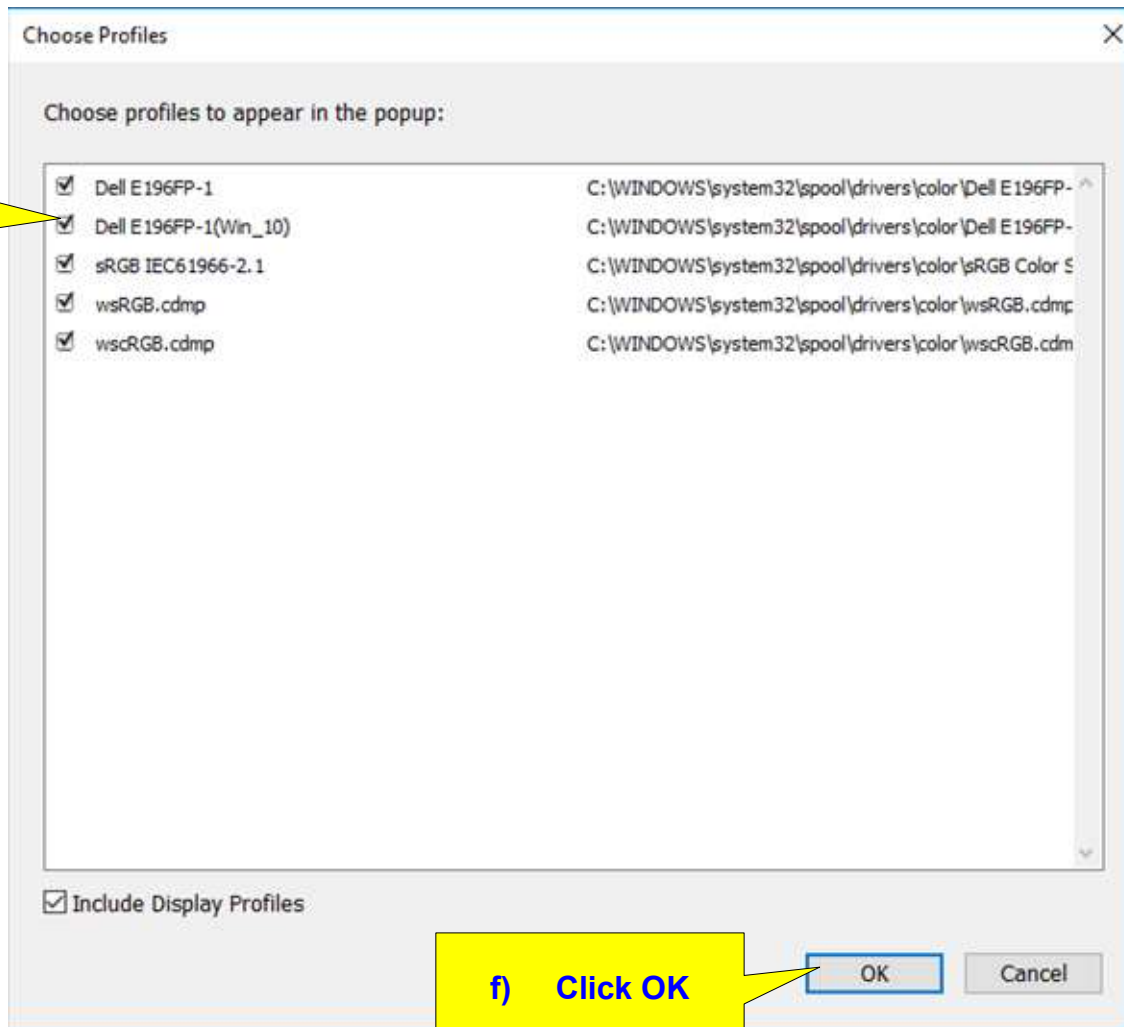
b) Select Other



**c) Tick Here**

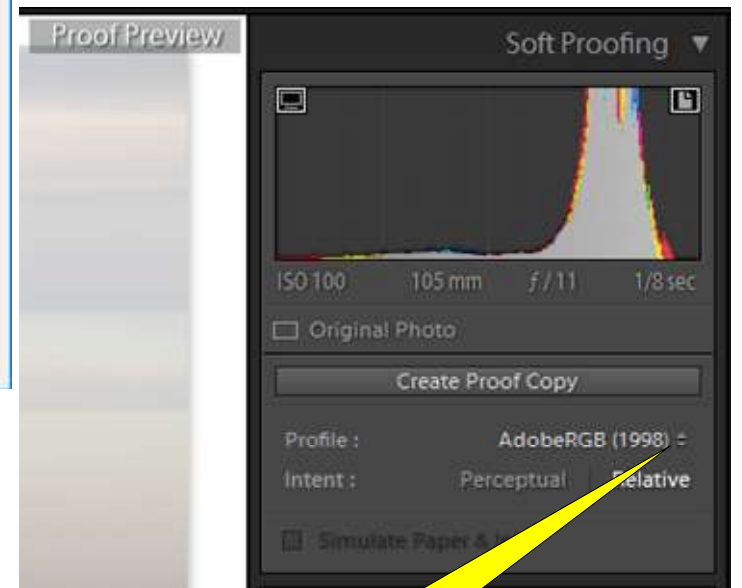


**d) Displays List**



e) Tick Each Here

f) Click OK



g) Click Profile

## Softproof in Lightroom

<http://blog.xritephoto.com/2013/05/softproof-in-lightroom-2/#sthash.0T5ulsjA.dpbs>

The screenshot shows the Adobe Lightroom Soft Proofing panel. At the top, there's a 'Soft Proofing' dropdown menu. Below it is a color bar and a histogram. The main area shows a photo with a 'Soft Proofing' overlay. Below the photo, there are camera settings: ISO 100, 105 mm, f/11, 1/8 sec. There's a checkbox for 'Original Photo' and a 'Create Proof Copy' button. The 'Profile' dropdown is open, showing a list of color management profiles: sRGB, AdobeRGB (1998), Dell E196FP-1, Dell E196FP-1(Win\_10), sRGB IEC61966-2.1 (selected), wscRGB.cdmp, wsRGB.cdmp, and Other... At the bottom, there are sliders for 'Temp' (6300) and 'Tint' (+17).

**Monitor Gamut Warning [ Blue on Image ]**

**Destination Gamut Warning(PRINTER) [ Red on Image ]**

**New Options have been added + your Screen Calibration**

**This is my Screen [Dell E196FP] - Calibration for Windows 10 [my monitor Profile]**

**From f) on Previous page this option was selected automatically**

**OR Select PRINTER PROFILE if Printer added**

You can select each in turn and watch how it affects the Soft Proofing Image

You should select the one that refers to your Screen Calibration - using Spyder 4 or which ever calibration tool you have used.