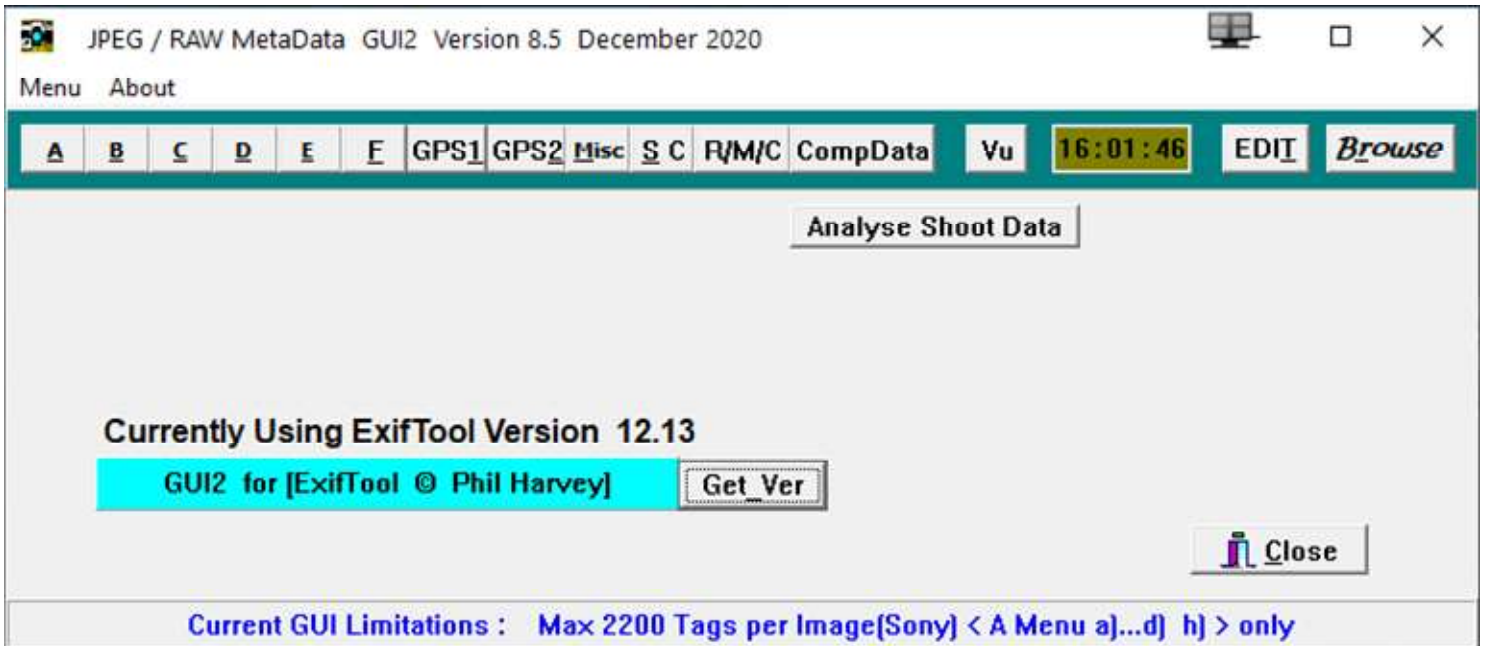
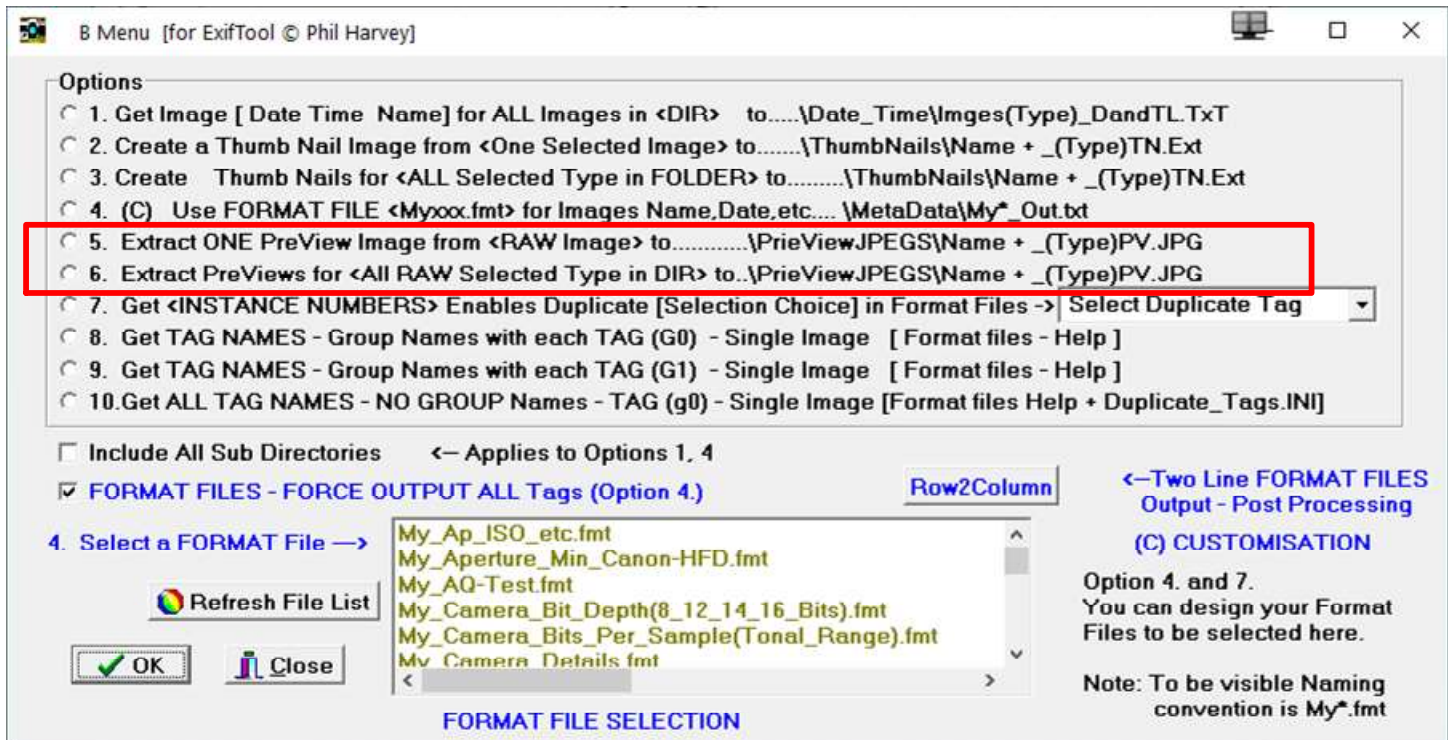


GUI2 8.5 Update Reason



B-Menu Options 5 & 6 can now handle 85 RAW Image Types - was 50



See Full List of RAW Image types

GUI2_RAW_Camera_List_Ver_1.0_Rev_A.pdf

https://gui2-for-exiftool.weebly.com/uploads/8/2/4/7/8247457/gui2_raw_camera_list_ver_1.0_rev_a.pdf

B-Menu Options 5 & 6 can now handle 85 different RAW image types

Options

- 1. Get Image [Date Time Name] for ALL Images in <DIR> to.....\Date_Time\Imges(Type)_DandTL.Txt
- 2. Create a Thumb Nail Image from <One Selected Image> to.....\ThumbNails\Name + _(Type)TN.Ext
- 3. Create Thumb Nails for <ALL Selected Type in FOLDER> to.....\ThumbNails\Name + _(Type)TN.Ext
- 4. (C) Use FORMAT FILE <Myxxx.fmt> for Images Name,Date,etc.... \MetaData\My*_Out.txt
- 5. Extract ONE PreView Image from <RAW Image> to.....\PrieViewJPEGS\Name + _(Type)PV.JPG
- 6. Extract PreViews for <All RAW Selected Type in DIR> to..\PrieViewJPEGS\Name + _(Type)PV.JPG
- 7. Get <INSTANCE NUMBERS> Enables Duplicate [Selection Choice] in Format Files -> Select Duplicate Tag
- 8. Get TAG NAMES - Group Names with each TAG (G0) - Single Image [Format files - Help]
- 9. Get TAG NAMES - Group Names with each TAG (G1) - Single Image [Format files - Help]
- 10. Get ALL TAG NAMES - NO GROUP Names - TAG (g0) - Single Image [Format files Help + Duplicate_Tags.INI]

Include All Sub Directories ← Applies to Options 1, 4

FORMAT FILES - FORCE OUTPUT ALL Tags (Option 4.) Row2Column

4. Select a FORMAT File →

My_Ap_ISO_etc.fmt
 My_Aperture_Min_Canon-HFD.fmt
 My_AQ-Test.fmt
 My_Camera_Bit_Depth(8_12_14_16_Bits).fmt
 My_Camera_Bits_Per_Sample(Tonal_Range).fmt
 My_Camera_Details.fmt

FORMAT FILE SELECTION

←Two Line FORMAT FILES Output - Post Processing
(C) CUSTOMISATION
Option 4. and 7.
You can design your Format Files to be selected here.
Note: To be visible Naming convention is My*.fmt

R/M/C-Menu - Copy Pallet - missing designation

Rename / Move / Copy Images

Move | Rename and Move | **Copy**

Rename I | Rename II

Copy Options

- a) Copy [Image Option] in FOLDER to your choice [NEW FOLDER]
- b) Copy [Image Option] in FOLDER to New FOLDER based on Image Type [JPG_Images, CR2_Images etc]
- c) Copy [Image Option] in FOLDER to New FOLDER based on Image Type [JPG_XXX, CR2_XXX etc.]
- d) Copy to New FOLDER based on Date Options [Year Options, Month Options, Day Options]
- e) Copy based on <Date Option> adding File Number <AFTER> Image Name e.g. Image(100-2324).JPG
- f) Copy based on <Date Option> adding File Number <BEFORE> Image Name e.g. (100-2324)Image.JPG

Type in your[NEW FOLDER NAME] here or XXX

Image Option

- Single Image
- All Image Type
- All Images

Select Date Option ▾

[Year Options]

- YYYY
- YY

[Month Options]

- 01-12 Month Number
- Jan Feb ..Dec
- January February ..
- 01-12 + Jan Feb
- 01-12 + January ..
- 00-53 (Week Number)
- 00-53 + Jan Feb ..
- 00-53 + January ..
- No Month Option

[Day Options]

- 01-31
- 01-31 + Mon Tue
- 01-31 + (Mon) (Tue) ..
- 01-31 + Jan Feb ..
- 01-31 + January ..
- 001-366 Day of Year
- 001-366 + Jan Feb ..
- 001-366 + Jan + 01-31
- 001-366 + January + 01-31

Click "No Month Option" to use Day Options 001-366

[Year Options] Missing