

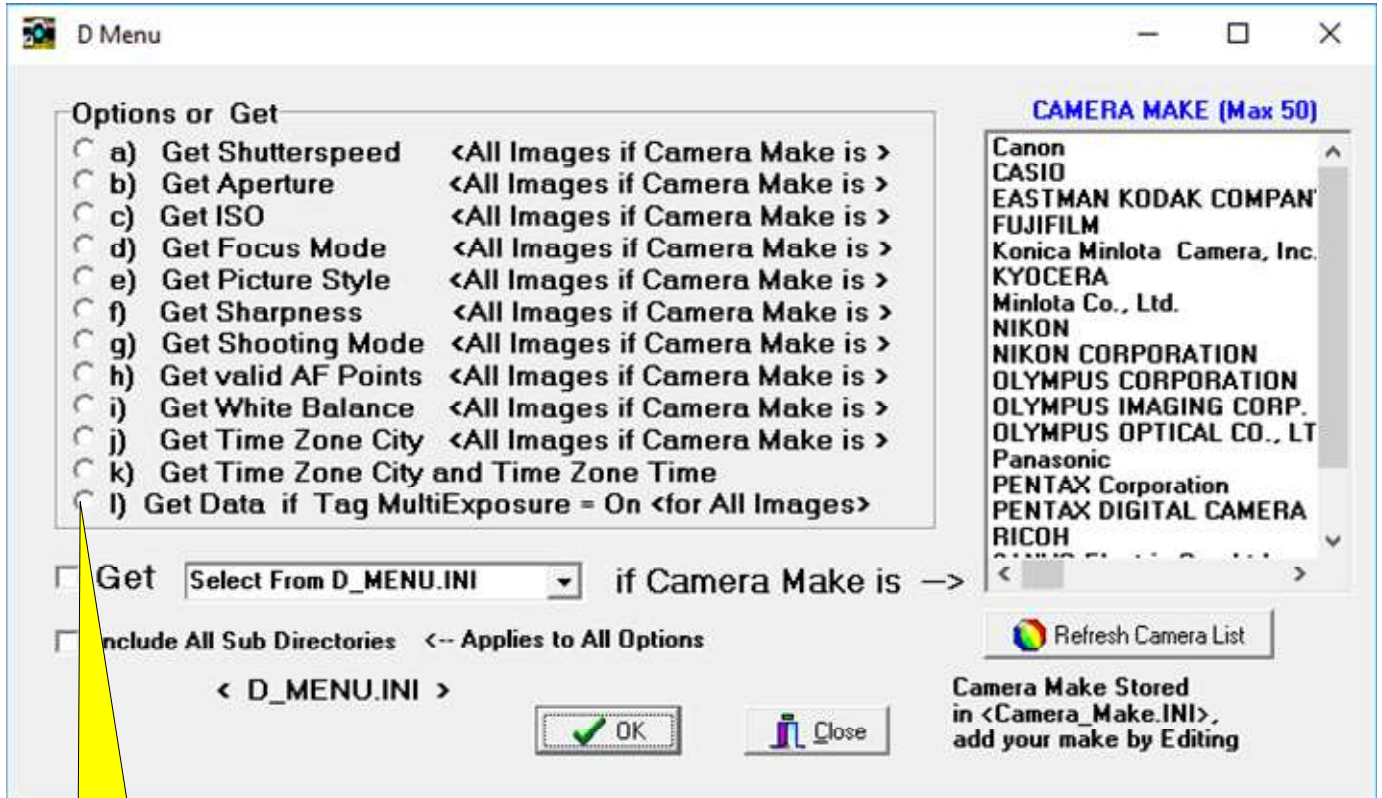
Prepared Andrew Quinlan		Document Title GUI2 Update_History		Page 21(23)
Approved AndyQuinlan@eircom.net	Checked	Date 14-05-2017	Rev D	Reference GUI2 Version 7.2

GUI2 Updated to Version 7.2 , Revision B

Date : 14 May 2017

a) D- Menu

New Option I) Added



NEW Option

NOTE Options k) and l) don't require Camera Make selection

Updated to Version 7.2 , Revision B

Date : 14 May 2017

b) D- Menu Notes

NOTE: The D_MENU.INI file is the Default at Setup and is Camera Model dependant and for Windows 10 64 Bit is located in Folder:



Use A Menu: Option c) to generate a D_MENU.INI file for YOUR Camera. (See Page 6) then replace the Default D_MENU.INI with YOUR newly generated D_MENU.INI

The D_MENU.INI file **NOW** has ALL the TAGs from YOUR Camera Model available to < Get Option Drop Down List >

The Drop Down List is sorted in Alphabetic order, type the first letter of TAG you want to Search for , e.g. S and it will jump to all the TAGs beginning with S

c) D- Menu GET Search Option - Output Folder Now named as search TAG

D MENU Get Option Note: Get has priority over Options :
i.e. if an Option is selected and you Tick Get - the Option will be deselected

Search Tag Selected will be: Output Folder Name

Example : Get Option

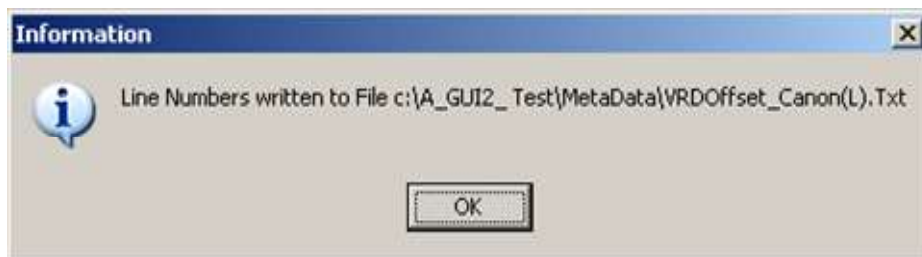


Figure 6C : D Menu Option -Get

D_MENU.INI Option + Camera Make + Type

Searches All Image Type in Directory for "VRDOffset" for Images taken with "Canon" camera

D Menu Option	For Complete Options List see D_MENU.INI contents	Line Numbers	Single File	Output Folder	Output File Naming
Get	Example	x	x	..\VRDOffset\	VRDOffset_ + Camera Make(L).TxT



D Menu Option - <Get> Message completed

Figure 6D

**d) D- Menu Fixed Output Problem All Menu Options including GET.
New Output Directory / Folder Naming**

D Menu : Details of Output File Naming convention for each Option

D Menu Option	Search All Sub Directories	Single File	Additional File	Line Numbers	Output Directory or Folder All Files	Output File Naming
a)	X X	X		X X	..\ShutterSpeed\	Shutter_Speed_ + Camera Make(L).TxT Shutter_Speed_ + Camera Make_R(L).TxT Shutter_Speed_ + Camera Make_R.TxT
b)	X X	X	X	X X	..\Aperture\	Aperture_ + Camera Make(L).TxT Aperture_ + Camera Make_R(L).TxT Aperture_ + Camera Make_R.TxT
c)	X X	X		X X	..\ISO\	ISO_ + Camera Make(L).TxT ISO_ + Camera Make_R(L).TxT ISO_ + Camera Make_R.TxT
d)	X X	X	X	X X	..\FocusMode\	Focus_Mode_ + Camera Make(L).TxT Focus_Mode_ + Camera Make_R(L).TxT Focus_Mode_ + Camera Make_R.TxT
e)	X X	X	X	X X	..\PictureStyle\	Picture_Style_ + Camera Make(L).TxT Picture_Style_ + Camera Make_R(L).TxT Picture_Style_ + Camera Make_R.TxT
f)	X X	X	X	X X	..\Sharpness\	Sharpness_ + Camera Make(L).TxT Sharpness_ + Camera Make_R(L).TxT Sharpness_ + Camera Make_R.TxT
g)	X X	X	X	X X	..\ShootingMode\	Shooting_Mode_ + Camera Make(L).TxT Shooting_Mode_ + Camera Make_R(L).TxT Shooting_Mode_ + Camera Make_R.TxT
h)	X X	X	X	X X	..\ValidAFPoints\	Valid_AF_Points_ + Camera Make(L).TxT Valid_AF_Points_ + Camera Make_R(L).TxT Valid_AF_Points_ + Camera Make_R(L).TxT
i)	X X	X	X	X X	..\WhiteBalance\	White_Balance_ + Camera Make(L).TxT White_Balance_ + Camera Make_R(L).TxT White_Balance_ + Camera Make_R.TxT
j)	X X	X	X	X X	..\TimeZoneCity\	TimeZoneCity_ + Camera Make(L).TxT TimeZoneCity_ + Camera Make_R(L).TxT TimeZoneCity_ + Camera Make_R.TxT
k)	X X	X			..\TimeZone_City_Time\	TimeZone_City_Time.TxT TimeZone_City_Time_R.TxT
l)	X X	X			..\Multi_Exposure\	Multi_Exposure.TxT Multi_Exposure_R.TxT

(L) indicates Line numbers(Count) for each Image Type found
(L) Valid for Options a) ...k) only

R indicates Recursive search of all Sub Folders

NEW