

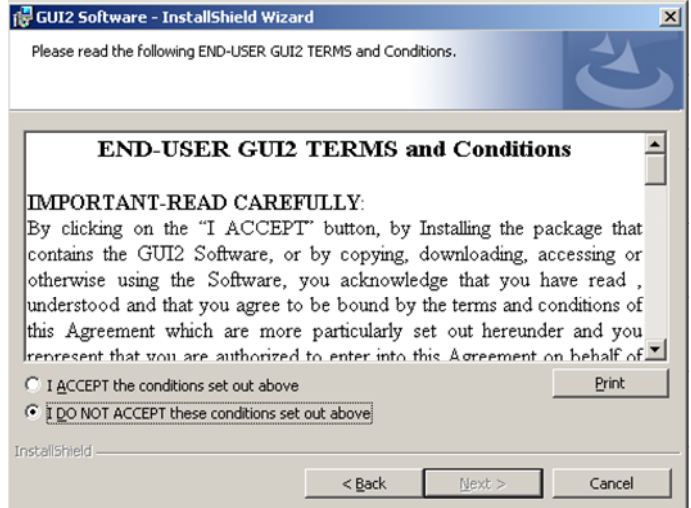
Prepared Andrew Quinlan		Document Title GUI2 First Installation		Page 1(2)
Approved	Checked	Date 16-12-2015	Rev A	Reference GUI2 Version 7.0

GUI2 First Installation (ExifTool Version 10.07)

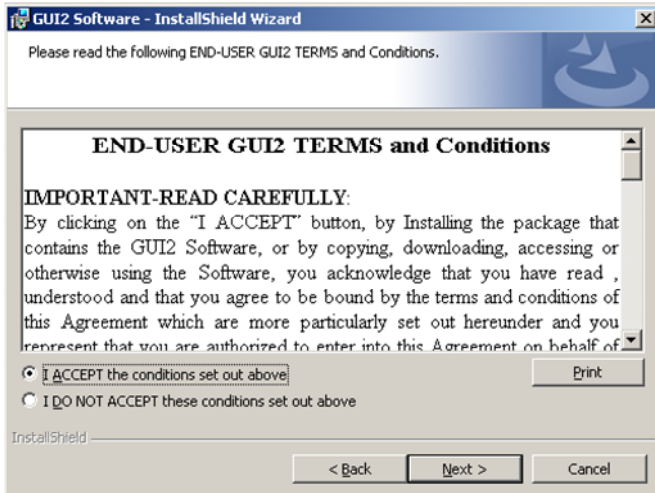
a) DoubleClick SetupGUI2(Install_UnInstall_1007).exe



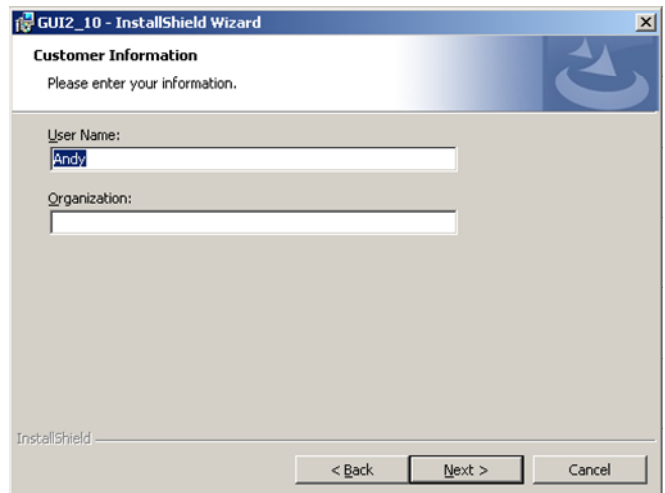
b) Default Setting



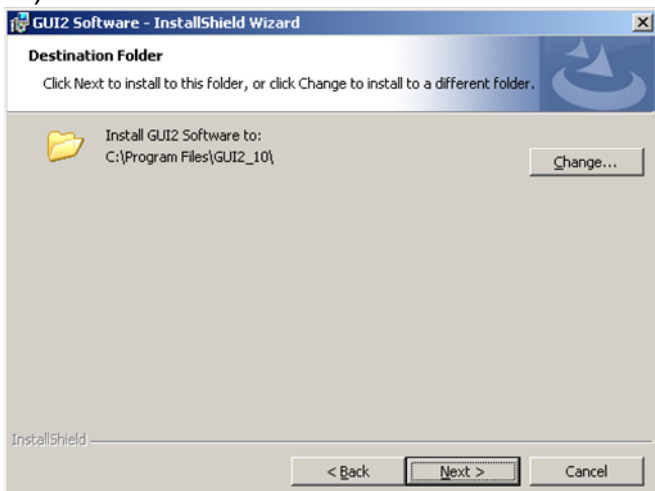
c) Clicked I ACCEPT (Next Visible)



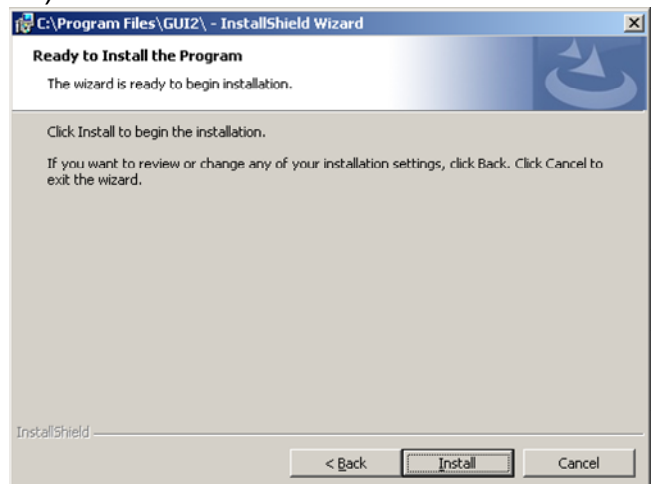
d)



e)

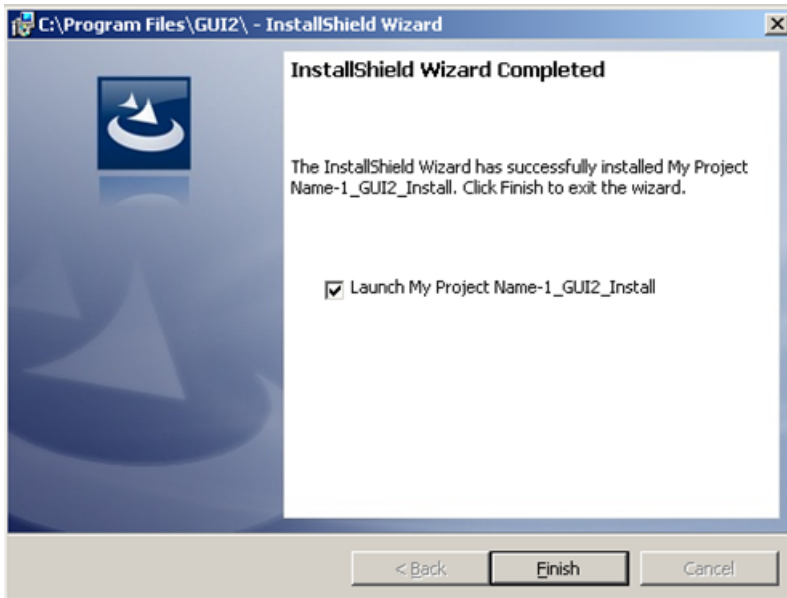


f)

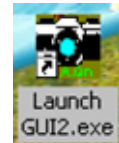


<i>Prepared</i> Andrew Quinlan		<i>Document Title</i> GUI2 First Installation		<i>Page</i> 2(2)	
<i>Approved</i>	<i>Checked</i>	<i>Date</i> 16-12-2015	<i>Rev</i> A	<i>Reference</i> GUI2 Version 7.0	

g)



GUI2 Icon on Desktop



h)

After clicking Finish to Launch GUI2

i)

Close GUI2 and re-Launch again from Desktop Icon