

<i>Prepared</i> Andrew Quinlan		<i>Version</i> Version 1.1		
<i>Approved</i>	<i>Checked</i>	<i>Date</i> 10-04-2012	<i>Rev</i> D	<i>File</i> Format_Files(Ver 1.1 Rev D).pdf

**FORMAT FILES and DUPLICATE / TRIPLICATE TAGS**

Abstract

This document describes how to Customize and use Format Files with GUI2 B-MENU and GPS1 and GPS2 menus.

A new DIRectory ..\Duplicate\_Tags is created automatically by GUI2

It also shows how to handle Duplicate/Triplicate Tags in Format Files

A “Format File Example” plus its “Output Examples” are included.

Where to find Relevant Tag Names

Tag Names on Phil Harvey’s website :

<http://www.sno.phy.queensu.ca/~phil/exiftool/TagNames/>

Composite Tags( are **Derived From** the values of other tags )

<http://www.sno.phy.queensu.ca/~phil/exiftool/TagNames/Composite.html>

1	UPDATE HISTORY (REASON FOR UPDATE)	2
2	FORMAT FILES AND DUPLICATE / TRIPLICATE TAGS	2
2.1	FILES USED TO EXPLAIN FORMAT FILE HANDLING IN GUI2	2
2.2	PARTIAL LIST OF DUPLICATE CANON TAGS	3
2.3	EXAMPLE TRIPLICATE TAGS – IMG_1381.JPG	4
2.4	HOW CAN I GET [ F NUMBER OF 8.9 ?]	4
3	GUI2 - NEW B MENU OPTION 7	5
3.1	GUI2 - B MENU OPTION 7 OUTPUT FILE NAMING EXAMPLE	5
3.2	EXAMPLE – EXPOSURETIME [ OUTPUT DATA OPTION 7]	6
4	FORMAT FILE - CUSTOMIZATION EXAMPLE	6
4.1	OUTPUT FILE NAMING – [ OUTPUT DATA OPTION 7]	6
4.2	FORMAT FILE – EXIFTOOL DOCUMENTATION	7
4.3	FORMAT FILE [ CONTENTS EXAMPLE ]	8
5	FORMAT FILE [OUTPUT EXAMPLE FOR TWO JPEG IMAGES ]	9
5.1	FORMAT FILE [ OUTPUT EXAMPLE 1 DATA CONTENTS ]	9
5.2	FORMAT FILE [ OUTPUT EXAMPLE 2 DATA CONTENTS ]	11
5.3	FORMAT FILE [ OUTPUT WITH RECURSION – SEARCH ALL DIRS ]	14
5.4	FORMAT FILE [ OUTPUT – SEARCH ALL DIRS EXAMPLE FOR RAW & JPEG]	14

<i>Prepared</i> Andrew Quinlan		<i>Version</i> Version 1.1	
<i>Approved</i>	<i>Checked</i>	<i>Date</i> 10-04-2012	<i>Rev</i> D
		<i>File</i> Format_Files(Ver 1.1 Rev D).pdf	

**1 UPDATE HISTORY (REASON FOR UPDATE)**

- Two new optional "ExifTool Features" added for Option 4 B Menu
- Tick Box - Search All Sub Directories [ Recursion( -r) Feature 1 ]
- New Tick Box -Force Output of ALL specified Tags ( -f) [ Feature 2 ]
- Incorrect date 208-01-2012 (Rev C to D) 10-04-2012

**2 FORMAT FILES AND DUPLICATE / TRIPLICATE TAGS**

This document describes how to Customize and use Format Files with GUI2

**2.1 FILES USED TO EXPLAIN FORMAT FILE HANDLING IN GUI2**

- This File - Description
- Duplicate\_Tags.INI - Partial List of Canon Duplicate Tags
- My\_Example\_Format\_File.fmt - Example Format File
- My\_Example\_Format\_File\_Out.txt - Example Output for Format File
- File naming convention used in B-Menu is My\*.fmt – to be visible in window.
- File naming convention used in GPS1-Menu is GPS1\*.fmt – to be visible in window.
- File naming convention used in GPS2-Menu is GPS2\*.fmt – to be visible in window.

<i>Prepared</i> Andrew Quinlan		<i>Version</i> Version 1.1	
<i>Approved</i>	<i>Checked</i>	<i>Date</i> 10-04-2012	<i>Rev</i> D
		<i>File</i> Format_Files(Ver 1.1 Rev D).pdf	

**2.2 PARTIAL LIST OF DUPLICATE CANON TAGS**

This Duplicate list is stored in file "Duplicate\_Tags.INI"

You can edit and Customize this file to your own requirements.

No need to have the entries in Alphabetical order as GUI2 always sorts the drop down list.

- CameraTemperature
- ColorSpace
- ColorTemperature
- CreateDate
- Date/TimeOriginal
- ExposureCompensation
- ExposureTime
- FNumber**
- FocalLength
- GPSLatitude
- GPSLongitude
- HighlightTonePriority
- ISO
- Lens
- LensType
- LongFocal
- MeasuredEV
- MeteringMode
- ModifyDate
- PictureStyle
- ResolutionUnit
- ShortFocal
- WhiteBalance
- XResolution

<i>Prepared</i> Andrew Quinlan		<i>Version</i> Version 1.1		
<i>Approved</i>	<i>Checked</i>	<i>Date</i> 10-04-2012	<i>Rev</i> D	<i>File</i> Format_Files(Ver 1.1 Rev D).pdf

**2.3 EXAMPLE TRIPLICATE TAGS – IMG\_1381.JPG**

“Digital Image” from Canon DIGITAL IXUS 100 IS

a) [ExifTool -a -m -u -G -FNumber IMG\_1381.JPG] with ExifTool Ver: 8.77

gives three values for F Number Tag

**Returns Output:**

```
[EXIF]      F Number      : 9.0
[MakerNotes] F Number      : 8.9
[MakerNotes] F Number      : 9
```

b) using Format File

\$Makernotes:FNumber or \$Canon:FNumber

Always Gives Output value for [MakerNotes] F Number i.e. 9

**2.4 HOW CAN I GET [ F NUMBER OF 8.9 ?]**

**Question:** How can I use my "Format File" to extract the Second ] F Number

[MakerNotes] value of : 8.9 ?

**Answer:**

Use [ExifTool -a -m -u -G4 -FNumber IMG\_1381.JPG]

Returns Output:

```
[ ]      F Number      : 9.0
[Copy1] F Number      : 8.9
[Copy2] F Number      : 9
```

With **Format Files**

Use \$Copy1:Makernotes:FNumber or \$Copy1:Canon:FNumber

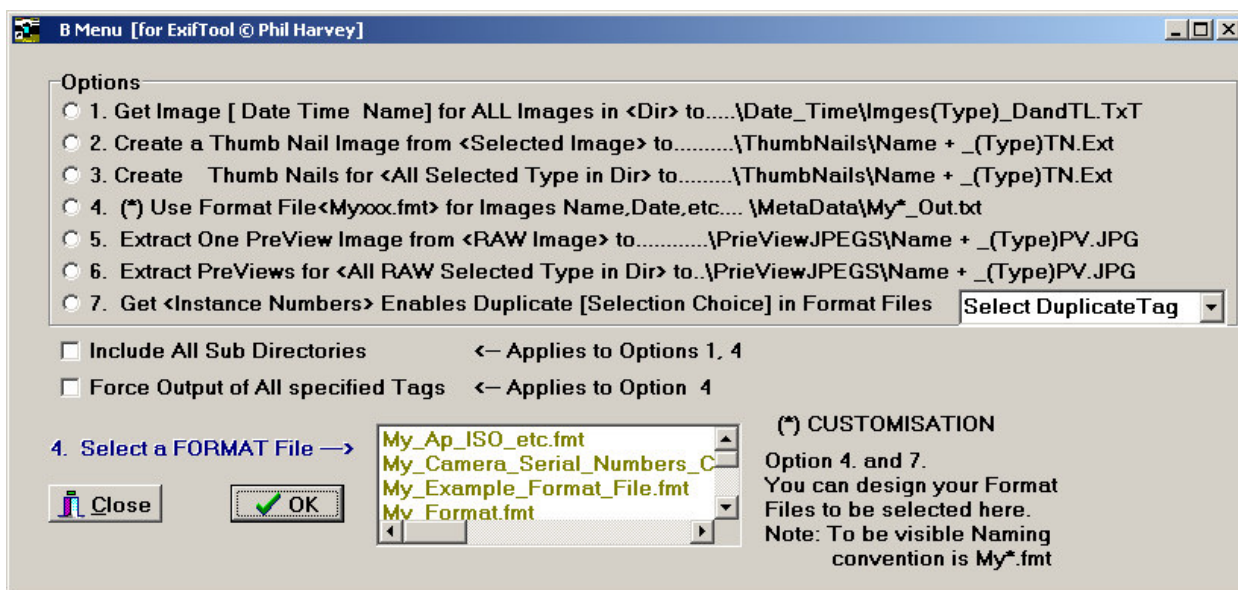
To extract the Second F Number

Use [ExifTool -Copy1:FNumber IMG\_1381.JPG]

Prepared Andrew Quinlan		Version Version 1.1	
Approved	Checked	Date 10-04-2012	Rev D
		File Format_Files(Ver 1.1 Rev D).pdf	

3 **GUI2 - NEW B MENU OPTION 7**

B Menu has been updated, New Option 7 is now used with a “Drop down List” of Duplicate Tags in INI file “Duplicate\_Tags.INI” which can be Customized by the user



3.1 **GUI2 - B MENU OPTION 7 OUTPUT FILE NAMING EXAMPLE**

“Two Files” are output per Duplicate Tag Selected from Option 7 drop Down List

New **DIR**ectory ..... \Duplicate\_Tags\ is created automatically off Image Directory

Exposure Time        \Duplicate\_Tags\ExposureTime.txt  
                          \duplicate\_tags\ExposureTime(Tag\_Group).txt

**F Number**            \Duplicate\_Tags\Fnumber.txt  
                          \duplicate\_tags\Fnumber(Tag\_Group).txt

Focal Length         \duplicate\_tags\FocalLength.txt  
etc.

(Tick Box) Include All Sub DIRectories now applies to Option 4

(Tick Box ) Force Output of All specified Tags (New) applies to Option 4

<i>Prepared</i> Andrew Quinlan		<i>Version</i> Version 1.1		
<i>Approved</i>	<i>Checked</i>	<i>Date</i> 10-04-2012	<i>Rev</i> D	<i>File</i> Format_Files(Ver 1.1 Rev D).pdf

**3.2 EXAMPLE – EXPOSURETIME [ OUTPUT DATA OPTION 7]**

ExposureTime - Files Output using [B Menu Option 7] for Image IMG\_1381.JPG:

i) File ...\\Duplicate\_Tags\\ExposureTime(Tag\_Group).txt

```
[EXIF]           Exposure Time       : 1/250
[MakerNotes]     Exposure Time       : 1/245
[MakerNotes]     Exposure Time       : 1/249
```

ii) File ...\\Duplicate\_Tags\\ExposureTime.txt

```
[]              Exposure Time       : 1/250
[Copy1]          Exposure Time       : 1/245
[Copy2]          Exposure Time       : 1/249
```

**4 FORMAT FILE - CUSTOMIZATION EXAMPLE**

**4.1 OUTPUT FILE NAMING – [ OUTPUT DATA OPTION 7]**

The output file naming has been updated to take account of the two new features added.

- i) ExifTool Feature 1: Include all Sub Directories
- ii) ExifTool Feature 2: Force output of All specified Tags ,  
This feature forces the printing of Tags even if their values are not found, with this feature a dash “-“ is output for the value of any missing Tag

Input File Name: My\_Example\_Format\_File.fmt

**Option 1 – No Feature included**

Output File Name: My\_Example\_Format\_File\_Out.txt

**Option 2 - Feature 2 included**

Output File Name: My\_Example\_Format\_File\_(f)Out.txt

**Option 3 – Feature 1 included**

Output File Name: My\_Example\_Format\_File\_(R)Out.txt

**Option 4– Features 1 & 2 included**

Output File Name: My\_Example\_Format\_File\_(fR)Out.txt

<i>Prepared</i> Andrew Quinlan		<i>Version</i> Version 1.1	
<i>Approved</i>	<i>Checked</i>	<i>Date</i> 10-04-2012	<i>Rev</i> D
		<i>File</i> Format_Files(Ver 1.1 Rev D).pdf	

**4.2           FORMAT FILE – EXIFTOOL DOCUMENTATION**

File Name : My\_Example\_Format\_File.fmt

Braces "{ }" may be used around "TAG Name" to separate it from subsequent text.

***See Application Documentation for Exiftool***

-p \*FMTFILE\* or \*STR\* (-printFormat) for complete explanation plus other features.

```
# Comment Line
#[HEAD]Generated by ExifTool [ © Phil Harvey] Version $exifToolVersion
#[TAIL] .....end
```

Prepared Andrew Quinlan		Version Version 1.1	
Approved	Checked	Date 10-04-2012	Rev D
		File Format_Files(Ver 1.1 Rev D).pdf	

4.3 FORMAT FILE [ CONTENTS EXAMPLE ]

```
# Comment Line
#[HEAD]Generated by ExifTool [ © Phil Harvey] Version $exifToolVersion
#[HEAD] GUI2 [ © Andrew Quinlan]
#[HEAD]
#[HEAD] See Application Documentation for Exiftool
#[HEAD]     -p *FMFILE* or *STR* (-printFormat) for
#[HEAD]     complete explanation plus other features.
#[HEAD]
#[HEAD] Not found Tags will be omitted,
#[HEAD]     a)...v,w,w1,w2) prefix makes it easy to identify
#[HEAD]     "Missing Tags in Output" depending on Camera used.
#[HEAD]
#[HEAD] i) FileName , Date Time Original
#[HEAD] ii) Camera Used
#[HEAD]
#[HEAD] a) Aperture
#[HEAD] b) Aperture Value     Braces "{" may be used around TAG name to
                        separate it from subsequent text
#[HEAD] c) Camera ISO
#[HEAD] d) ISO                 Braces "{" may be used around TAG name to
                        separate it from subsequent text
#[HEAD] e) Drive Mode
#[HEAD] f) Exposure Program
#[HEAD] g) Shooting Mode
#[HEAD] h) File Type
#[HEAD] i) Flash
#[HEAD] j) Focal Length
#[HEAD] k) Focus Mode
#[HEAD] l) Metering Mode
#[HEAD] m) Num AF Points
#[HEAD] n) Picture Style
#[HEAD] o) Shutter Speed
#[HEAD] p) Shutter Speed Value
#[HEAD] q) White Balance
#[HEAD] r) Camera Model Name
#[HEAD] s) Camera Type
#[HEAD] t) Firmware Version
#[HEAD] u) Lens ID
#[HEAD] v) Lens Serial Number
#[HEAD] w) F Number
#[HEAD] w1) Copy1 [Canon or Makernotes] F Number
#[HEAD] w2) Copy2 [Canon or Makernotes] F Number
#[HEAD] .....
      (Note above dotted Line will precede First Image in Output File)
i) FileName = $FileName , Date Time $DateTimeOriginal
ii) Camera Used .....$Model

a) Aperture           = { $Aperture}   You can Place a comment here
b) Aperture Value    = $ApertureValue
c) Camera ISO        = $CameraISO
```



<i>Prepared</i> Andrew Quinlan		<i>Version</i> Version 1.1	
<i>Approved</i>	<i>Checked</i>	<i>Date</i> 10-04-2012	<i>Rev</i> D
		<i>File</i> Format_Files(Ver 1.1 Rev D).pdf	

d) ISO = { \$ISO} You can Place a comment here  
 e) Drive Mode = \$DriveMode  
 f) Exposure Program = \$ExposureProgram  
 g) Shooting Mode = \$Shooting Mode  
 h) File Type = \$FileType  
 i) Flash = \$Flash  
 j) Focal Length = \$FocalLength  
 k) Focus Mode = \$FocusMode  
 l) Metering Mode = \$MeteringMode  
 m) Num AF Points = \$NumAFPoints  
 n) Picture Style = \$PictureStyle  
 o) Shutter Speed = \$Shutter Speed  
 p) Shutter Speed Value = \$ShutterSpeedValue  
 q) White Balance = \$WhiteBalance  
 r) Camera Model Name = \$CameraModelName  
 s) Camera Type = \$CameraType  
 t) Firmware Version = \$FirmwareVersion  
 u) Lens ID = \$LensID  
 v) Lens Serial Number = \$LensSerialNumber  
 w) F Number = \$FNumber  
 w1) Copy1 Canon F Number = \$Copy1:Canon:FNumber  
 w2) Copy2 Makernotes F Number = \$Copy2:Makernotes:Fnumber  
*(Note this SPACE line will be used to Separate each Image in Output File)*  
 #[TAIL] .....end

**5 FORMAT FILE [OUTPUT EXAMPLE FOR TWO JPEG IMAGES]**

Input File Name: My\_Example\_Format\_File.fmt  
 Output File Name: My\_Example\_Format\_File\_Out.txt  
**Image 1 :** Christmas\_2011\_070.JPG  
**Image 2 :** IMG\_1381.JPG

**5.1 FORMAT FILE [ OUTPUT EXAMPLE 1 DATA CONTENTS ]**



<i>Prepared</i> Andrew Quinlan		<i>Version</i> Version 1.1	
<i>Approved</i>	<i>Checked</i>	<i>Date</i> 10-04-2012	<i>Rev</i> D
		<i>File</i> Format_Files(Ver 1.1 Rev D).pdf	

- e) Drive Mode = Continuous Shooting
- h) File Type = JPEG
- i) Flash = On, Fired
- j) Focal Length = 20.0 mm
- k) Focus Mode = AI Servo AF
- l) Metering Mode = Evaluative
- m) Num AF Points = 19
- n) Picture Style = Faithful
- p) Shutter Speed Value = 1/64
- q) White Balance = Auto
- s) Camera Type = n/a
- u) Lens ID = Canon EF-S 18-135mm f/3.5-5.6 IS
- w) F Number = 4.0
- w1) Copy1 Canon F Number = 4

- i) FileName = **IMG\_1381.JPG** , Date Time 2011:03:04 12:39:20
- ii) Camera Used .....Canon DIGITAL IXUS 100 IS

- a) Aperture = { 9.0} You can Place a comment here
- b) Aperture Value = 9.0
- c) Camera ISO = 200
- d) ISO = { 200} You can Place a comment here
- e) Drive Mode = Continuous Shooting
- h) File Type = JPEG
- i) Flash = Off, Did not fire
- j) Focal Length = 5.9 mm
- k) Focus Mode = Single
- l) Metering Mode = Center-weighted average
- m) Num AF Points = 9
- p) Shutter Speed Value = 1/251
- q) White Balance = Custom
- s) Camera Type = Compact
- u) Lens ID = Unknown 5-17mm
- w) F Number = 9.0
- w1) Copy1 Canon F Number = 8.9
- w2) Copy2 Makernotes F Number = 9

.....end

**5.2 FORMAT FILE [ OUTPUT EXAMPLE 2 DATA CONTENTS ]**

**Option 2 - Feature 2 included**

Output File Name: My\_Example\_Format\_File\_(f)Out.txt

<i>Prepared</i> Andrew Quinlan		<i>Version</i> Version 1.1	
<i>Approved</i>	<i>Checked</i>	<i>Date</i> 10-04-2012	<i>Rev</i> D
		<i>File</i> Format_Files(Ver 1.1 Rev D).pdf	

Generated by ExifTool [ © Phil Harvey] Version 8.78  
 GUI2 [ © Andrew Quinlan]

See Application Documentation for Exiftool  
 -p \*FMTFILE\* or \*STR\* (-printFormat) for  
 complete explanation plus other features.

Not found Tags will be omitted,  
 a)....v,w,w1,w2) prefix makes it easy to identify  
 "Missing Tags in Output" depending on Camera used.

- i) FileName , Date Time Original
- ii) Camera Used

- a) Aperture
- b) Aperture Value      Braces "{" }" may be used around TAG name to  
    separate it from subsequent text
- c) Camera ISO
- d) ISO                      Braces "{" }" may be used around TAG name to  
    separate it from subsequent text
- e) Drive Mode
- f) Exposure Program
- g) Shooting Mode
- h) File Type
- i) Flash
- j) Focal Length
- k) Focus Mode
- l) Metering Mode
- m) Num AF Points
- n) Picture Style
- o) Shutter Speed
- p) Shutter Speed Value
- q) White Balance
- r) Camera Model Name
- s) Camera Type
- t) Firmware Version
- u) Lens ID
- v) Lens Serial Number
- w) F Number
- w1) Copy1 [Canon or Makernotes] F Number
- w2) Copy2 [Canon or Makernotes] F Number

- .....
- i) FileName = **Christmas\_2011\_070.JPG**, Date Time 2011:12:27 16:18:15
  - ii) Camera Used .....Canon EOS 7D
  - a) Aperture                      = { 4.0}                      I can Place a comment here
  - b) Aperture Value                = 4.0
  - c) Camera ISO                    = Auto
  - d) ISO                              = { 400}                      I can Place a comment here
  - e) Drive Mode                    = Continuous Shooting

<i>Prepared</i> Andrew Quinlan		<i>Version</i> Version 1.1	
<i>Approved</i>	<i>Checked</i>	<i>Date</i> 10-04-2012	<i>Rev</i> D
		<i>File</i> Format_Files(Ver 1.1 Rev D).pdf	

- f) Exposure Program = -
- g) Shooting Mode = - Mode
- h) File Type = JPEG
- i) Flash = On, Fired
- j) Focal Length = 20.0 mm
- k) Focus Mode = AI Servo AF
- l) Metering Mode = Evaluative
- m) Num AF Points = 19
- n) Picture Style = Faithful
- o) Shutter Speed = - Speed
- p) Shutter Speed Value = 1/64
- q) White Balance = Auto
- r) Camera Model Name = -
- s) Camera Type = n/a
- t) Firmware Version = -
- u) Lens ID = Canon EF-S 18-135mm f/3.5-5.6 IS
- v) Lens Serial Number = -
- w) F Number = 4.0
- w1) Copy1 Canon F Number = 4
- w2) Copy2 Makernotes F Number = -

- i) FileName = **IMG\_1381.JPG** , Date Time 2012:02:16 20:47:07
- ii) Camera Used .....Canon DIGITAL IXUS 100 IS
- a) Aperture = { 9.0} I can Place a comment here
- b) Aperture Value = 9.0
- c) Camera ISO = 200
- d) ISO = { 200} I can Place a comment here
- e) Drive Mode = Continuous Shooting
- f) Exposure Program = -
- g) Shooting Mode = - Mode
- h) File Type = JPEG
- i) Flash = Off, Did not fire
- j) Focal Length = 5.9 mm
- k) Focus Mode = Single
- l) Metering Mode = Center-weighted average
- m) Num AF Points = 9
- n) Picture Style = -
- o) Shutter Speed = - Speed
- p) Shutter Speed Value = 1/251
- q) White Balance = Custom
- r) Camera Model Name = -
- s) Camera Type = Compact
- t) Firmware Version = -
- u) Lens ID = Unknown 5-17mm
- v) Lens Serial Number = -
- w) F Number = 9.0
- w1) Copy1 Canon F Number = 8.9
- w2) Copy2 Makernotes F Number = 9

<i>Prepared</i> Andrew Quinlan		<i>Version</i> Version 1.1		
<i>Approved</i>	<i>Checked</i>	<i>Date</i> 10-04-2012	<i>Rev</i> D	<i>File</i> Format_Files(Ver 1.1 Rev D).pdf

.....end

**5.3 FORMAT FILE [ OUTPUT WITH RECURSION – SEARCH ALL DIRS ]**

When the feature search all subdirectories is used – all file types that exist will be searched.

If for example you have taken images in both RAW and JPEG, you could have a Directory with the JPEG files and create a Sub directory off same for the RAW files.

You can now use B Menu option 4 with Features 1 & 2 included to search all the RAW and JPEG file.

**5.4 FORMAT FILE [ OUTPUT – SEARCH ALL DIRS EXAMPLE FOR RAW & JPEG]**

Generated by ExifTool [ © Phil Harvey] Version 8.78  
 GUI2 [ © Andrew Quinlan]

See Application Documentation for Exiftool  
 -p \*FMFILE\* or \*STR\* (-printFormat) for complete explanation plus other features.

Not found Tags will be omitted,

a)....v,w,w1,w2) prefix makes it easy to identify  
 "Missing Tags in Output" depending on Camera used.

File Location - Directory

- i) FileName , Date Time Original
- ii) Camera Used
- a) Aperture
- b) Aperture Value Braces "{" }" may be used around TAG name to separate it from subsequent text
- c) Camera ISO
- d) ISO Braces "{" }" may be used around TAG name to separate it from subsequent text
- e) Drive Mode
- f) Exposure Program
- g) Shooting Mode
- h) File Type
- i) Flash
- j) Focal Length
- k) Focus Mode
- l) Metering Mode
- m) Num AF Points
- n) Picture Style
- o) Shutter Speed
- p) Shutter Speed Value
- q) White Balance

<i>Prepared</i> Andrew Quinlan		<i>Version</i> Version 1.1	
<i>Approved</i>	<i>Checked</i>	<i>Date</i> 10-04-2012	<i>Rev</i> D
		<i>File</i> Format_Files(Ver 1.1 Rev D).pdf	

- r) Camera Model Name
- s) Camera Type
- t) Firmware Version
- u) Lens ID
- v) Lens Serial Number
- w) F Number
- w1) Copy1 [Canon or Makernotes] F Number
- w2) Copy2 [Canon or Makernotes] F Number

.....  
 File Location = .  
 i) FileName = **Dick\_3Rock\_009.JPG** , Date Time 2012:01:08 15:37:38  
 ii) Camera Used .....Canon EOS 7D  
 a) Aperture = { 32.0} I can Place a comment here  
 b) Aperture Value = 32.0  
 c) Camera ISO = Auto  
 d) ISO = { 100} I can Place a comment here  
 e) Drive Mode = Self-timer Operation  
 f) Exposure Program = Shutter speed priority AE  
 g) Shooting Mode = - Mode  
 h) File Type = JPEG  
 i) Flash = Off, Did not fire  
 j) Focal Length = 55.0 mm  
 k) Focus Mode = One-shot AF  
 l) Metering Mode = Evaluative  
 m) Num AF Points = 19  
 n) Picture Style = Landscape  
 o) Shutter Speed = - Speed  
 p) Shutter Speed Value = 1  
 q) White Balance = Auto  
 r) Camera Model Name = -  
 s) Camera Type = EOS High-end  
 t) Firmware Version = 1.2.5  
 u) Lens ID = Canon EF-S 18-135mm f/3.5-5.6 IS  
 v) Lens Serial Number = 00002008af  
 w) F Number = 32.0  
 w1) Copy1 Canon F Number = 33  
 w2) Copy2 Makernotes F Number = 33

.....  
 File Location = .  
 i) FileName = **Dick\_3Rock\_015.JPG** , Date Time 2012:01:08 15:42:57  
 ii) Camera Used .....Canon EOS 7D  
 a) Aperture = { 25.0} I can Place a comment here  
 b) Aperture Value = 25.8  
 c) Camera ISO = -  
 d) ISO = { 100} I can Place a comment here  
 e) Drive Mode = Self-timer Operation  
 f) Exposure Program = Manual  
 g) Shooting Mode = - Mode  
 h) File Type = JPEG  
 i) Flash = Off, Did not fire  
 j) Focal Length = 55.0 mm  
 k) Focus Mode = One-shot AF

Prepared Andrew Quinlan		Version Version 1.1	
Approved	Checked	Date 10-04-2012	Rev D
		File Format_Files(Ver 1.1 Rev D).pdf	

- l) Metering Mode = Evaluative
- m) Num AF Points = 19
- n) Picture Style = Landscape
- o) Shutter Speed = - Speed
- p) Shutter Speed Value = 1
- q) White Balance = Auto
- r) Camera Model Name = -
- s) Camera Type = EOS High-end
- t) Firmware Version = 1.2.5
- u) Lens ID = Canon EF-S 18-135mm f/3.5-5.6 IS
- v) Lens Serial Number = 00002008af
- w) F Number = 25.0
- w1) Copy1 Canon F Number = 25
- w2) Copy2 Makernotes F Number = 26

File Location = .

- i) FileName = Dick\_3Rock\_016.JPG , Date Time 2012:01:08 15:43:56
- ii) Camera Used .....Canon EOS 7D
- a) Aperture = { 29.0} I can Place a comment here
- b) Aperture Value = 28.1
- c) Camera ISO = -
- d) ISO = { 100} I can Place a comment here
- e) Drive Mode = Self-timer Operation
- f) Exposure Program = Manual
- g) Shooting Mode = - Mode
- h) File Type = JPEG
- i) Flash = Off, Did not fire
- j) Focal Length = 55.0 mm
- k) Focus Mode = One-shot AF
- l) Metering Mode = Evaluative
- m) Num AF Points = 19
- n) Picture Style = Landscape
- o) Shutter Speed = - Speed
- p) Shutter Speed Value = 1
- q) White Balance = Auto
- r) Camera Model Name = -
- s) Camera Type = EOS High-end
- t) Firmware Version = 1.2.5
- u) Lens ID = Canon EF-S 18-135mm f/3.5-5.6 IS
- v) Lens Serial Number = 00002008af
- w) F Number = 29.0
- w1) Copy1 Canon F Number = 29
- w2) Copy2 Makernotes F Number = 28

File Location = .

- i) FileName = Dick\_3Rock\_018.JPG , Date Time 2012:01:08 15:49:11
- ii) Camera Used .....Canon EOS 7D
- a) Aperture = { 22.0} I can Place a comment here
- b) Aperture Value = 22.6
- c) Camera ISO = -
- d) ISO = { 100} I can Place a comment here
- e) Drive Mode = Self-timer Operation
- f) Exposure Program = Manual



Prepared Andrew Quinlan		Version Version 1.1	
Approved	Checked	Date 10-04-2012	Rev D
		File Format_Files(Ver 1.1 Rev D).pdf	

- g) Shooting Mode = - Mode
- h) File Type = JPEG
- i) Flash = Off, Did not fire
- j) Focal Length = 24.0 mm
- k) Focus Mode = Manual Focus (3)
- l) Metering Mode = Evaluative
- m) Num AF Points = 19
- n) Picture Style = Landscape
- o) Shutter Speed = - Speed
- p) Shutter Speed Value = 1
- q) White Balance = Auto
- r) Camera Model Name = -
- s) Camera Type = EOS High-end
- t) Firmware Version = 1.2.5
- u) Lens ID = Canon EF-S 18-135mm f/3.5-5.6 IS
- v) Lens Serial Number = 00002008af
- w) F Number = 22.0
- w1) Copy1 Canon F Number = 23
- w2) Copy2 Makernotes F Number = 23

File Location = raw

- i) FileName = **Dick\_3Rock\_009.CR2** , Date Time 2012:01:08 15:37:38
- ii) Camera Used .....Canon EOS 7D
- a) Aperture = { 32.0} I can Place a comment here
- b) Aperture Value = 32.0
- c) Camera ISO = Auto
- d) ISO = { 100} I can Place a comment here
- e) Drive Mode = Self-timer Operation
- f) Exposure Program = Shutter speed priority AE
- g) Shooting Mode = - Mode
- h) File Type = CR2
- i) Flash = Off, Did not fire
- j) Focal Length = 55.0 mm
- k) Focus Mode = One-shot AF
- l) Metering Mode = Evaluative
- m) Num AF Points = 19
- n) Picture Style = Landscape
- o) Shutter Speed = - Speed
- p) Shutter Speed Value = 1
- q) White Balance = Auto
- r) Camera Model Name = -
- s) Camera Type = EOS High-end
- t) Firmware Version = 1.2.5
- u) Lens ID = Canon EF-S 18-135mm f/3.5-5.6 IS
- v) Lens Serial Number = 00002008af
- w) F Number = 32.0
- w1) Copy1 Canon F Number = 33
- w2) Copy2 Makernotes F Number = 33

File Location = raw

- i) FileName = **Dick\_3Rock\_015.CR2** , Date Time 2012:01:08 15:42:57
- ii) Camera Used .....Canon EOS 7D
- a) Aperture = { 25.0} I can Place a comment here

<i>Prepared</i> Andrew Quinlan		<i>Version</i> Version 1.1	
<i>Approved</i>	<i>Checked</i>	<i>Date</i> 10-04-2012	<i>Rev</i> D
		<i>File</i> Format_Files(Ver 1.1 Rev D).pdf	

- b) Aperture Value = 25.8
- c) Camera ISO = -
- d) ISO = { 100} I can Place a comment here
- e) Drive Mode = Self-timer Operation
- f) Exposure Program = Manual
- g) Shooting Mode = - Mode
- h) File Type = CR2
- i) Flash = Off, Did not fire
- j) Focal Length = 55.0 mm
- k) Focus Mode = One-shot AF
- l) Metering Mode = Evaluative
- m) Num AF Points = 19
- n) Picture Style = Landscape
- o) Shutter Speed = - Speed
- p) Shutter Speed Value = 1
- q) White Balance = Auto
- r) Camera Model Name = -
- s) Camera Type = EOS High-end
- t) Firmware Version = 1.2.5
- u) Lens ID = Canon EF-S 18-135mm f/3.5-5.6 IS
- v) Lens Serial Number = 00002008af
- w) F Number = 25.0
- w1) Copy1 Canon F Number = 25
- w2) Copy2 Makernotes F Number = 26

File Location = raw

- i) FileName = Dick\_3Rock\_016.CR2 , Date Time 2012:01:08 15:43:56
- ii) Camera Used .....Canon EOS 7D
- a) Aperture = { 29.0} I can Place a comment here
- b) Aperture Value = 28.1
- c) Camera ISO = -
- d) ISO = { 100} I can Place a comment here
- e) Drive Mode = Self-timer Operation
- f) Exposure Program = Manual
- g) Shooting Mode = - Mode
- h) File Type = CR2
- i) Flash = Off, Did not fire
- j) Focal Length = 55.0 mm
- k) Focus Mode = One-shot AF
- l) Metering Mode = Evaluative
- m) Num AF Points = 19
- n) Picture Style = Landscape
- o) Shutter Speed = - Speed
- p) Shutter Speed Value = 1
- q) White Balance = Auto
- r) Camera Model Name = -
- s) Camera Type = EOS High-end
- t) Firmware Version = 1.2.5
- u) Lens ID = Canon EF-S 18-135mm f/3.5-5.6 IS
- v) Lens Serial Number = 00002008af
- w) F Number = 29.0
- w1) Copy1 Canon F Number = 29
- w2) Copy2 Makernotes F Number = 28

<i>Prepared</i> Andrew Quinlan		<i>Version</i> Version 1.1	
<i>Approved</i>	<i>Checked</i>	<i>Date</i> 10-04-2012	<i>Rev</i> D
		<i>File</i> Format_Files(Ver 1.1 Rev D).pdf	

File Location = raw

- i) FileName = Dick\_3Rock\_018.CR2 , Date Time 2012:01:08 15:49:11
- ii) Camera Used .....Canon EOS 7D
  - a) Aperture = { 22.0} I can Place a comment here
  - b) Aperture Value = 22.6
  - c) Camera ISO = -
  - d) ISO = { 100} I can Place a comment here
  - e) Drive Mode = Self-timer Operation
  - f) Exposure Program = Manual
  - g) Shooting Mode = - Mode
  - h) File Type = CR2
  - i) Flash = Off, Did not fire
  - j) Focal Length = 24.0 mm
  - k) Focus Mode = Manual Focus (3)
  - l) Metering Mode = Evaluative
  - m) Num AF Points = 19
  - n) Picture Style = Landscape
  - o) Shutter Speed = - Speed
  - p) Shutter Speed Value = 1
  - q) White Balance = Auto
  - r) Camera Model Name = -
  - s) Camera Type = EOS High-end
  - t) Firmware Version = 1.2.5
  - u) Lens ID = Canon EF-S 18-135mm f/3.5-5.6 IS
  - v) Lens Serial Number = 00002008af
  - w) F Number = 22.0
  - w1) Copy1 Canon F Number = 23
  - w2) Copy2 Makernotes F Number = 23

.....end