

<i>Prepared</i> Andrew Quinlan		<i>Version</i> Version 1.0		
<i>Approved</i>	<i>Checked</i>	<i>Date</i> 10-04-2012	<i>Rev</i> A	<i>File</i> Two_Line_Format_Files(Ver1.0 Rev B).pdf

**THE DASH “-“ IN TWO LINE FORMAT FILES**

Abstract

By allowing a dash where data from an Image is unavailable you get an output for every tag. This keeps all the files with the same number of data fields per image. This is very important if you are going to Import the file into XL where you can create Charts to profile and analyze your data.

1	TWO LINE FORMAT FILES	2
2	GUI2 B-MENU OPTION 4 (PLUS) [CUSTOMIZATION OPTIONS]	3
3	TWO LINE FORMAT FILES	3
3.1	OUTPUT FROM ABOVE TWO LINE FORMAT FILE EXAMPLE - (BEFORE ROW2COLUMN BUTTON)	4
3.2	CLICK ROW2COLUMN BUTTON	5
3.3	OUTPUT AFTER ROW2COLUMN BUTTON	6
3.4	HOW TO IMPORT TO XL	7
3.5	SELECT FILE TO IMPORT TO XL	8
3.6	HOW TO IMPORT TO XL STEP 1	9
3.7	HOW TO IMPORT TO XL STEP 2	10
3.8	HOW TO IMPORT TO XL STEP 3	11
3.9	AFTER IMPORT TO XL	12
3.10	CHART CREATED IN XL	13
3.11	SAME CHART BUT WITH DATA TABLES INCLUDED	14

<i>Prepared</i> Andrew Quinlan		<i>Version</i> Version 1.0		
<i>Approved</i>	<i>Checked</i>	<i>Date</i> 10-04-2012	<i>Rev</i> A	<i>File</i> Two_Line_Format_Files(Ver1.0 Rev B).pdf

**1        TWO LINE FORMAT FILES**

This is contents of two line Format file Example

```
# [HEAD]
#[HEAD]Aperture, Auto_ISO, Base_ISO, Canon_Image_Height, Canon_Image_Width, Sub_Sec_Time, X_Resolution,
$Aperture, $AutoISO, $BaseISO, $CanonImageHeight, $CanonImageWidth, $SubSecTime, $XResolution,
#[TAIL]
```

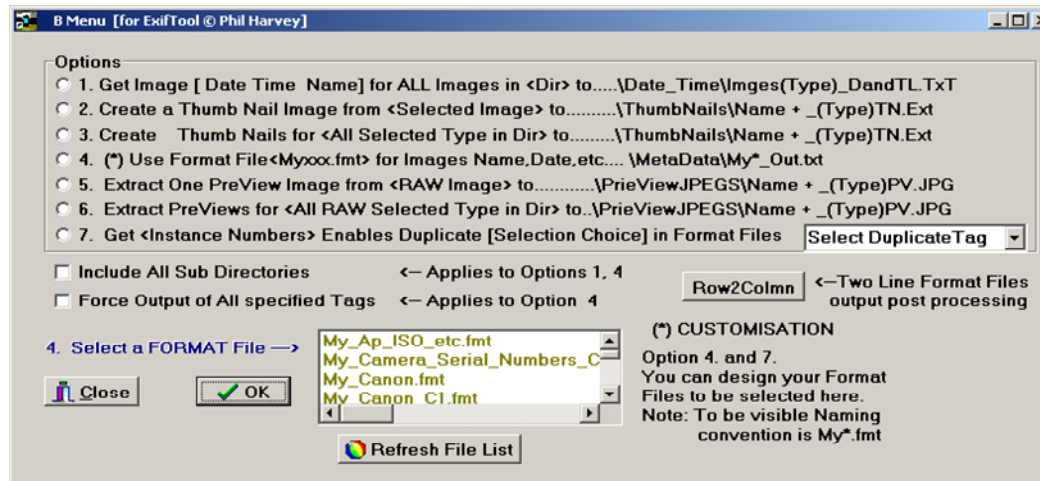
The first line gives the Headings and the delimiter used [i.e. the comma] by Excel to import the Data.  
Note comma after last tag.

The following six Delimiters only are valid for GUI2 : , ! | % ? @

This document is an attempt to indicate how “Two line Format Files” can be used to analyze an profile data obtained using “**EXIFTOOL**”

Prepared Andrew Quinlan		Version Version 1.0	
Approved	Checked	Date 10-04-2012	Rev A
		File Two_Line_Format_Files(Ver1.0 Rev B).pdf	

2

**GUI2 B-MENU OPTION 4 (PLUS) [CUSTOMIZATION OPTIONS ]**

New button Row2Column to change Option 4 output file from Row format to Column format for input to XL.

Before conversion each Row in output file represents the information per digital Image. After conversion each Column in new file created is per digital Image.

3

**TWO LINE FORMAT FILES**

This is contents of two line Format file "My\_XL2\_Format\_File.fmt"

```
#[HEAD]
#[HEAD]Aperture, Auto_ISO, Base_ISO, Canon_Image_Height, Canon_Image_Width, Sub_Sec_Time, X_Resolution,
$Aperture, $AutoISO, $BaseISO, $CanonImageHeight, $CanonImageWidth, $SubSecTime, $XResolution,
#[TAIL]
```

**Significance of Dash in Format Files- All Tags Output**

<i>Prepared</i> Andrew Quinlan		<i>Version</i> Version 1.0		
<i>Approved</i>	<i>Checked</i>	<i>Date</i> 10-04-2012	<i>Rev</i> A	<i>File</i> Two_Line_Format_Files(Ver1.0 Rev B).pdf

The first line gives the Headings and the delimiter used [i.e. the comma] by Excel to import the Data. Note comma after last tag.

**3.1 OUTPUT FROM ABOVE TWO LINE FORMAT FILE EXAMPLE - (BEFORE ROW2COLUMN BUTTON)**

This is contents of Format file "My\_XL2\_Format\_File.fmt" **Output file** "My\_XL2\_Format\_File\_(f)Out.txt"

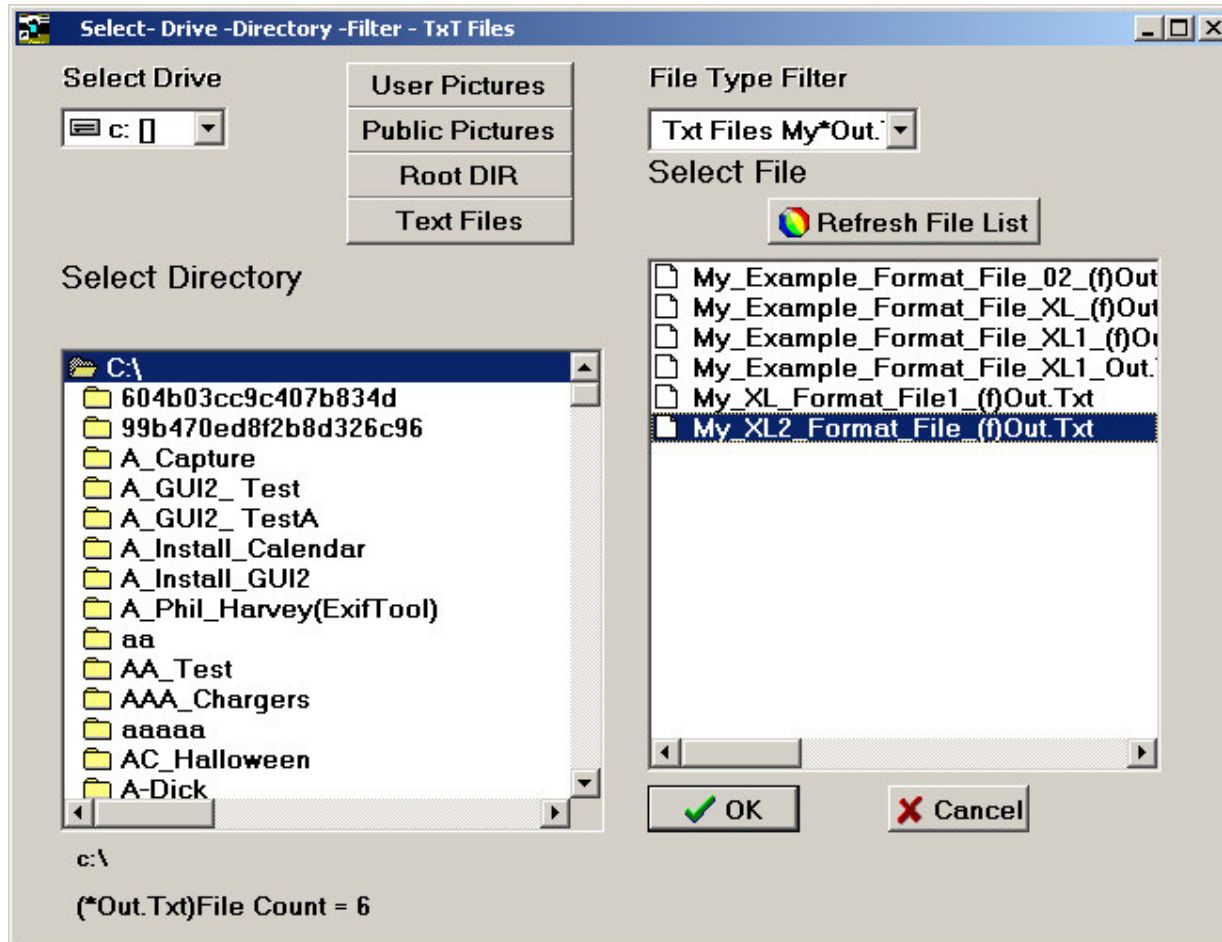
This data is from 15 digital Images(i.e. Heading row plus 15 rows of Data from 15 digital Images ).

Notice the Dash "-" where data is unavailable

```
Aperture, Auto_ISO, Base_ISO, Canon_Image_Height, Canon_Image_Width, Sub_Sec_Time, X_Resolution,
5.6, 100, 400, 2592, 3888, 81, 72,
7.1, 100, 200, 2848, 4272, -, 350,
2.8, 200, 100, 2448, 3264, -, 180,
3.1, 223, 100, 3240, 4320, -, 180,
7.1, -, -, -, -, -, 72,
4.0, 100, 400, 2848, 4272, 04, 72,
4.0, 100, 200, 2848, 4272, 89, 72,
2.8, 200, 100, 2304, 3072, -, 180,
5.6, 100, 100, 3456, 5184, 25, 72,
6.3, 100, 100, 3456, 5184, 22, 72,
11.0, 100, 100, 3456, 5184, 10, 72,
11.0, 100, 100, 3456, 5184, 77, 72,
11.0, 100, 100, 3456, 5184, 08, 72,
11.0, 100, 100, 3456, 5184, 97, 72,
11.0, 100, 100, 3456, 5184, 45, 72,
```

Prepared Andrew Quinlan		Version Version 1.0	
Approved	Checked	Date 10-04-2012	Rev A
File Two_Line_Format_Files(Ver1.0 Rev B).pdf			

3.2 CLICK ROW2COLUMN BUTTON



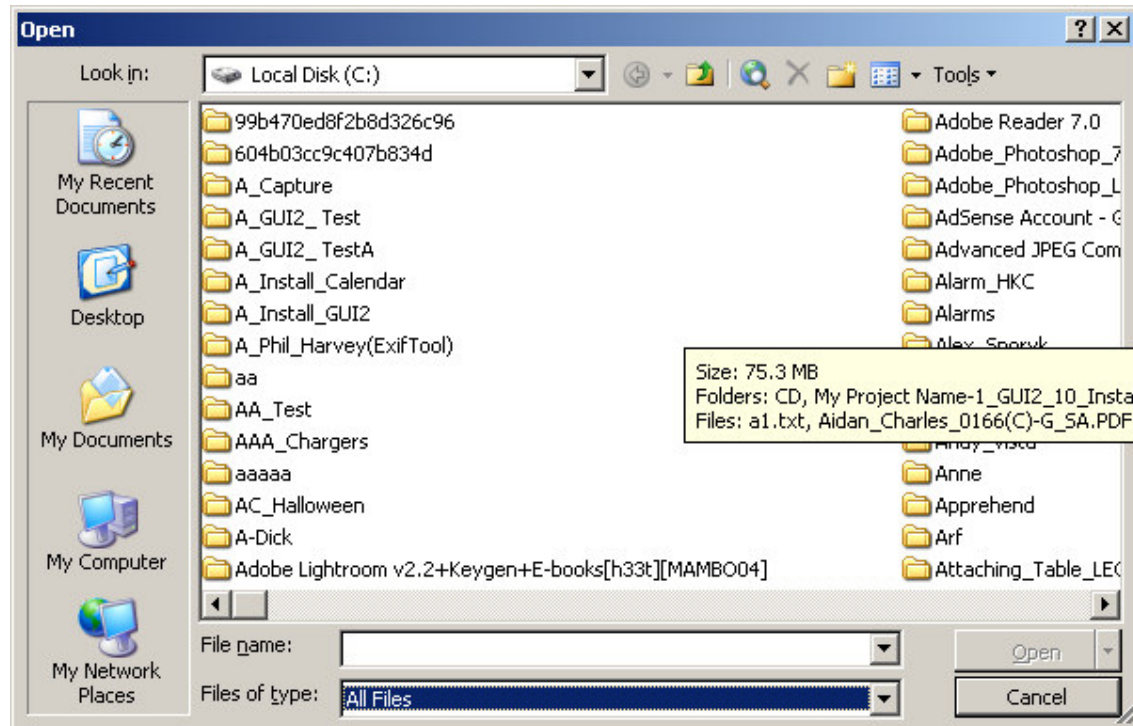
Select File to be Converted and click Ok.



Prepared Andrew Quinlan		Version Version 1.0	
Approved	Checked	Date 10-04-2012	Rev A
		File Two_Line_Format_Files(Ver1.0 Rev B).pdf	

### 3.4 HOW TO IMPORT TO XL

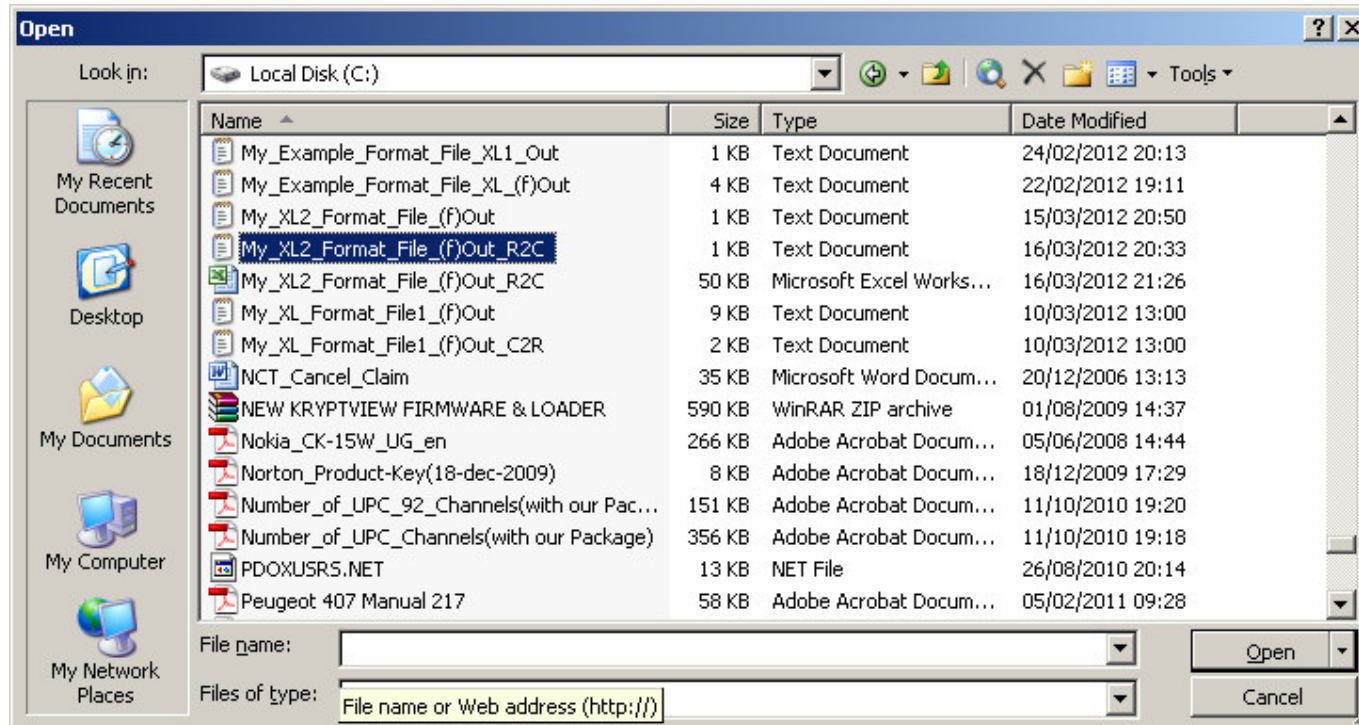
Open XL program and Click Open and set **Files of type:** to All Files



Prepared Andrew Quinlan		Version Version 1.0	
Approved	Checked	Date 10-04-2012	Rev A
File Two_Line_Format_Files(Ver1.0 Rev B).pdf			

### 3.5 SELECT FILE TO IMPORT TO XL

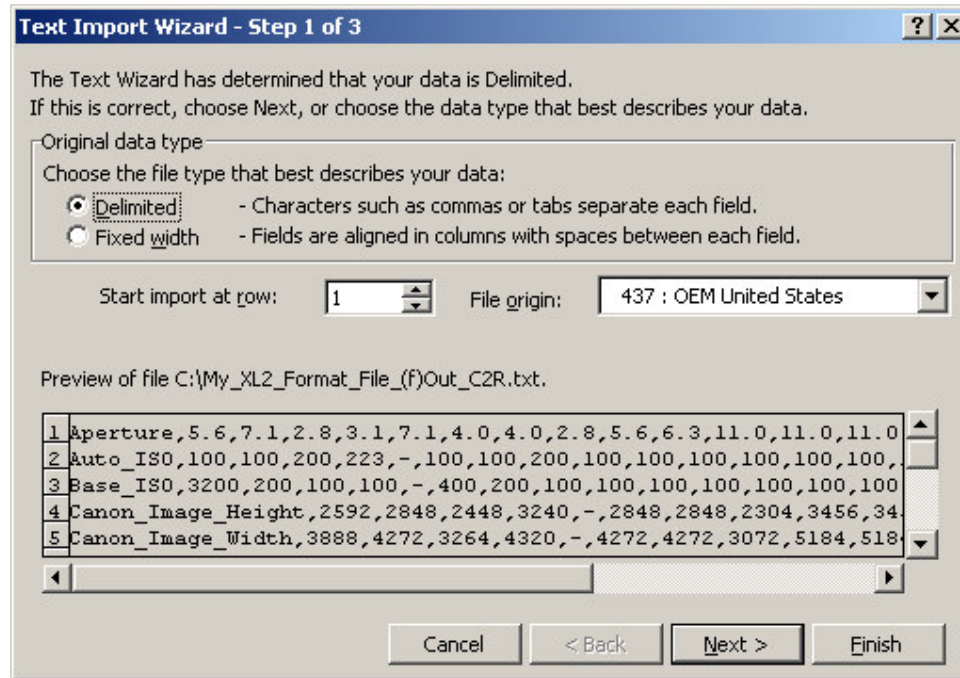
Select File and Click Open.





Prepared Andrew Quinlan		Version Version 1.0	
Approved	Checked	Date 10-04-2012	Rev A
		File Two_Line_Format_Files(Ver1.0 Rev B).pdf	

3.6 HOW TO IMPORT TO XL STEP 1

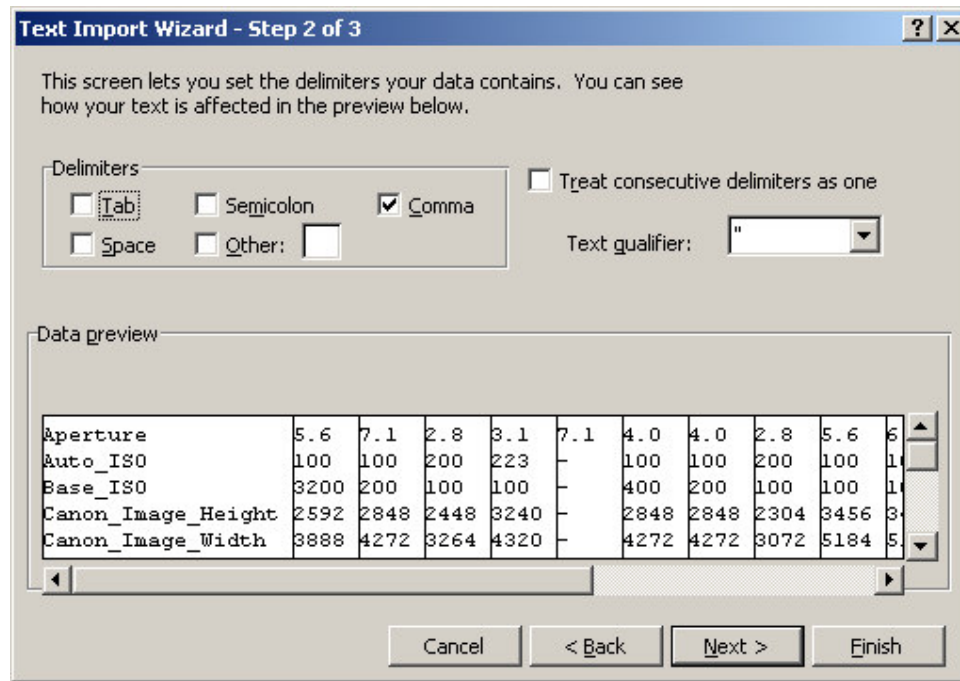


**Note** The following six Delimiters only are valid for GUI2 , ! | % ? @

Prepared Andrew Quinlan		Version Version 1.0	
Approved	Checked	Date 10-04-2012	Rev A
File Two_Line_Format_Files(Ver1.0 Rev B).pdf			

### 3.7 HOW TO IMPORT TO XL STEP 2

Here set Comma as delimiter , if Tab is set as default delimiter then remove it

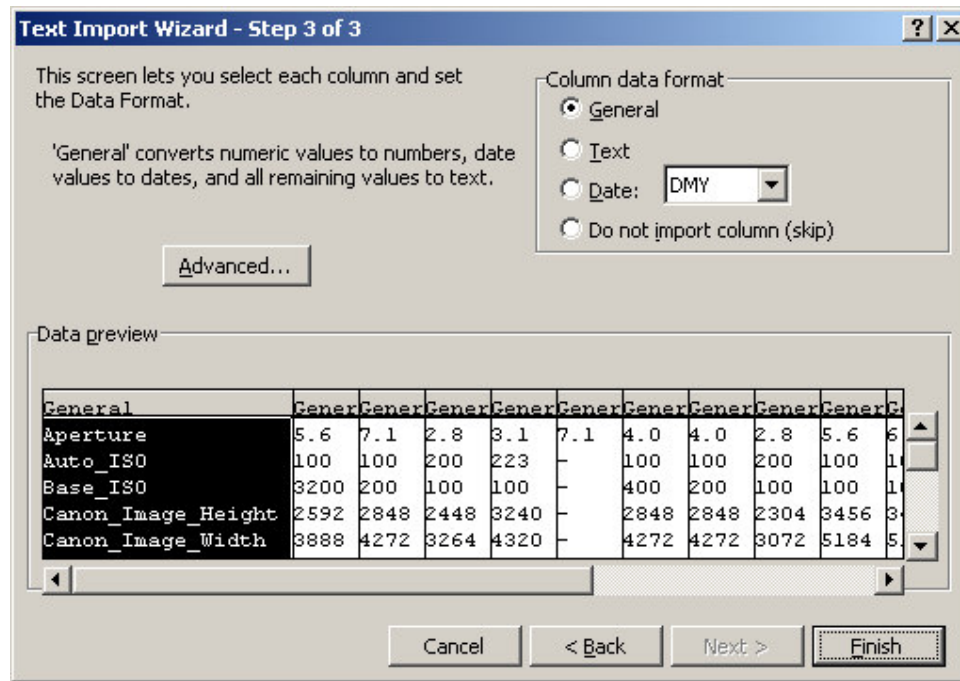


**Note** The following six Delimiters only are valid for GUI2 , ! | % ? @

Comma delimiter used

Prepared Andrew Quinlan		Version Version 1.0	
Approved	Checked	Date 10-04-2012	Rev A
File Two_Line_Format_Files(Ver1.0 Rev B).pdf			

3.8 HOW TO IMPORT TO XL STEP 3



Click Finish

## Significance of Dash in Format Files- All Tags Output

Prepared Andrew Quinlan		Version Version 1.0	
Approved	Checked	Date 10-04-2012	Rev A
File Two_Line_Format_Files(Ver1.0 Rev B).pdf			

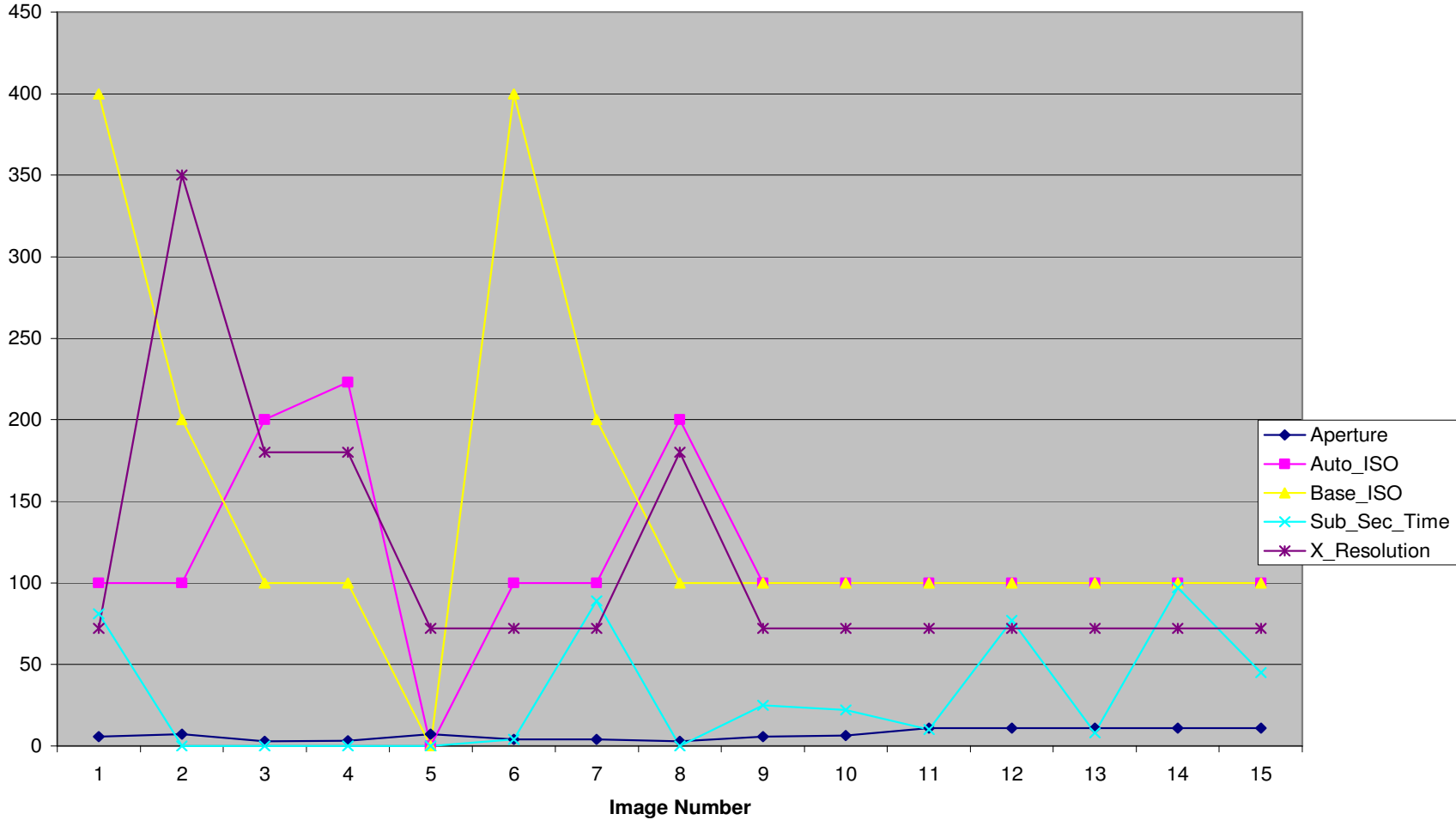
### 3.9 AFTER IMPORT TO XL

	A	B	C	D	E	F	G	H	I	J	K	L	M	N	O	P	Q
1	Aperture	5.6	7.1	2.8	3.1	7.1	4	4	2.8	5.6	6.3	11	11	11	11	11	
2	Auto_ISO	100	100	200	223	-	100	100	200	100	100	100	100	100	100	100	
3	Base_ISO	3200	200	100	100	-	400	200	100	100	100	100	100	100	100	100	
4	Canon_Image_Height	2592	2848	2448	3240	-	2848	2848	2304	3456	3456	3456	3456	3456	3456	3456	
5	Canon_Image_Width	3888	4272	3264	4320	-	4272	4272	3072	5184	5184	5184	5184	5184	5184	5184	
6	Sub_Sec_Time	81	-	-	-	-	4	89	-	25	22	10	77	8	97	45	
7	X_Resolution	72	350	180	180	72	72	72	180	72	72	72	72	72	72	72	
8																	
9																	

Aperture	5.6	7.1	2.8	3.1	7.1	4	4	2.8	5.6	6.3	11	11	11	11	11
Auto_ISO	100	100	200	223	-	100	100	200	100	100	100	100	100	100	100
Base_ISO	400	200	100	100	-	400	200	100	100	100	100	100	100	100	100
Canon_Image_Height	2592	2848	2448	3240	-	2848	2848	2304	3456	3456	3456	3456	3456	3456	3456
Canon_Image_Width	3888	4272	3264	4320	-	4272	4272	3072	5184	5184	5184	5184	5184	5184	5184
Sub_Sec_Time	81	-	-	-	-	4	89	-	25	22	10	77	8	97	45
X_Resolution	72	350	180	180	72	72	72	180	72	72	72	72	72	72	72

Prepared Andrew Quinlan		Version Version 1.0	
Approved	Checked	Date 10-04-2012	Rev A
File Two_Line_Format_Files(Ver1.0 Rev B).pdf			

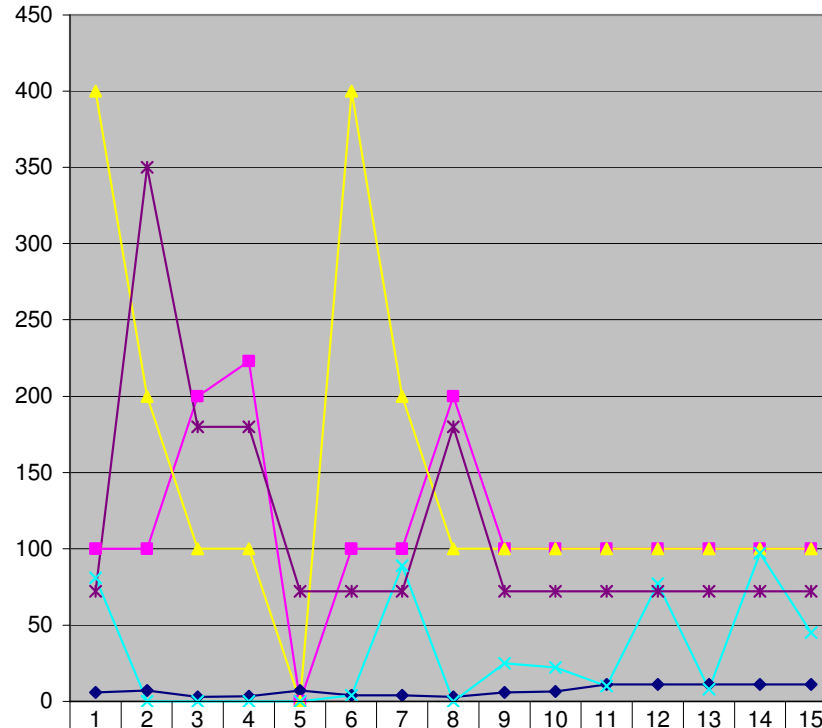
3.10 CHART CREATED IN XL



This chart is for all Tags except Canon\_Image\_Height and Canon\_Image\_Width

Prepared Andrew Quinlan		Version Version 1.0		
Approved	Checked	Date 10-04-2012	Rev A	File Two_Line_Format_Files(Ver1.0 Rev B).pdf

3.11 SAME CHART BUT WITH DATA TABLES INCLUDED



◆ Aperture
■ Auto_ISO
▲ Base_ISO
✕ Sub_Sec_Time
* X_Resolution

◆ Aperture	5.6	7.1	2.8	3.1	7.1	4	4	2.8	5.6	6.3	11	11	11	11	11
■ Auto_ISO	100	100	200	223	0	100	100	200	100	100	100	100	100	100	100
▲ Base_ISO	400	200	100	100	0	400	200	100	100	100	100	100	100	100	100
✕ Sub_Sec_Time	81	0	0	0	0	4	89	0	25	22	10	77	8	97	45
* X_Resolution	72	350	180	180	72	72	72	180	72	72	72	72	72	72	72

Image Number